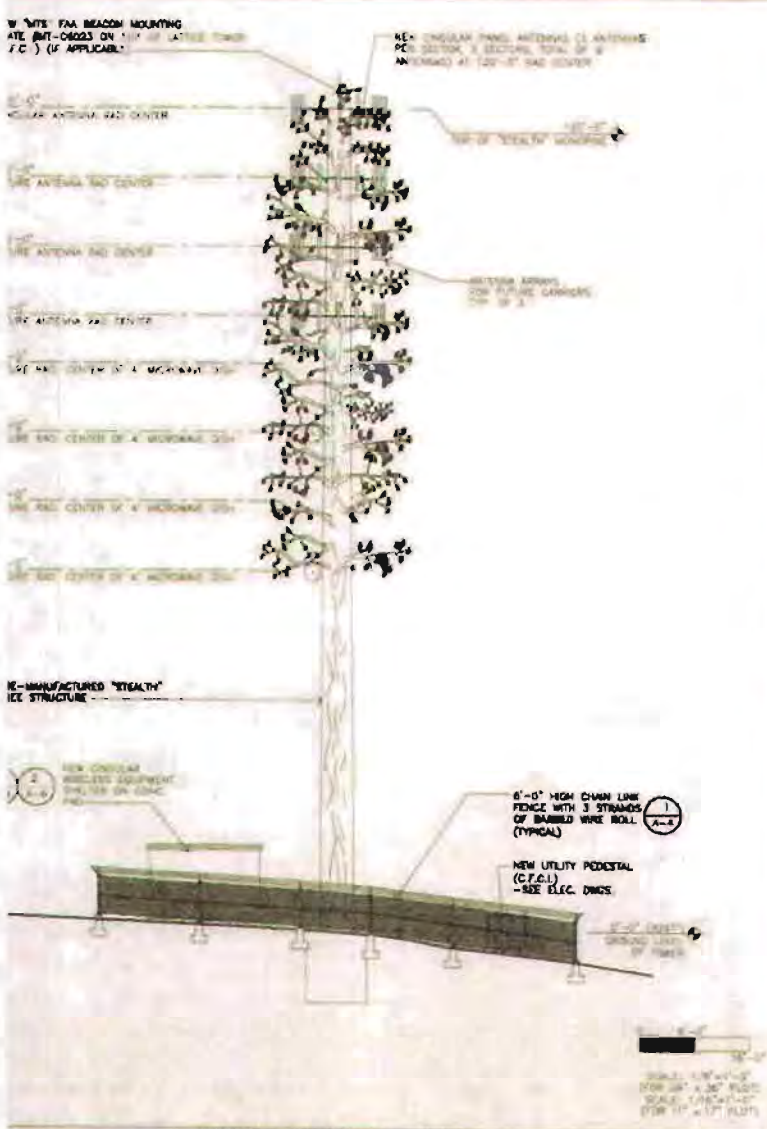


(Distributed by staff at meeting)

PC 11-8-12

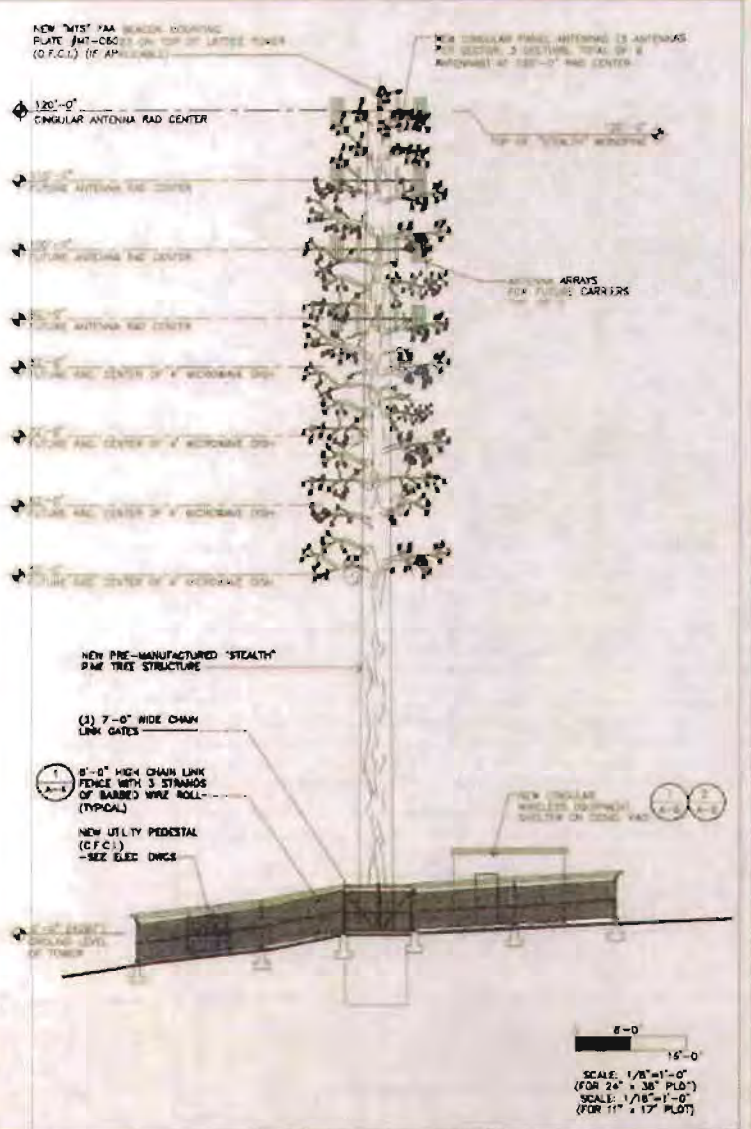
9b

PLANNING COMMISSION APPROVED PLANS
SEPTEMBER 12, 2002



NORTH ELEVATION VIEW

2



SOUTH ELEVATION VIEW

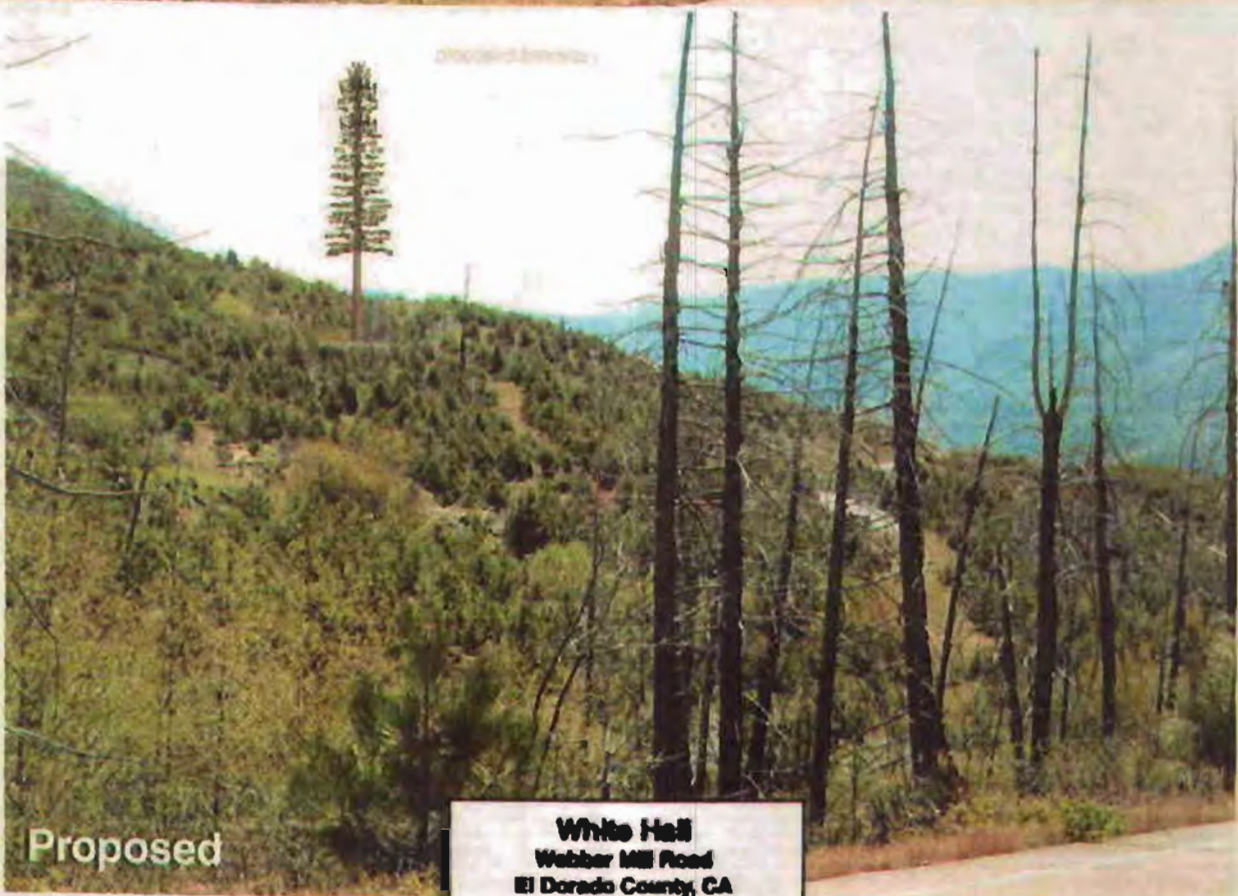
1

S 02 02



Existing

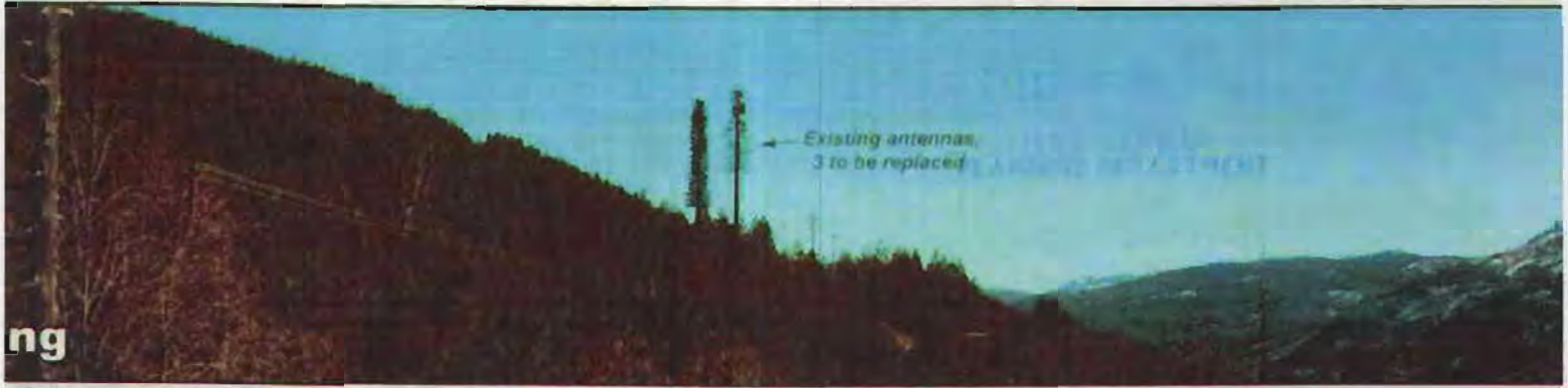
Looking East from Ice House Road



Proposed

White Hall
Webber Mill Road
El Dorado County, CA
attn: ATC 4885

Photosimulation of view looking east from Ice House Road.



© 2011 MetroPCS, all rights reserved. Any modification, alteration, copying, or reuse of any portion of this image is strictly prohibited and considered a violation of US copyright laws.
This photosimulation is based upon information provided by the project applicant. Questions or comments? call 1-877-395-3215 or visit www.metroPCS.com

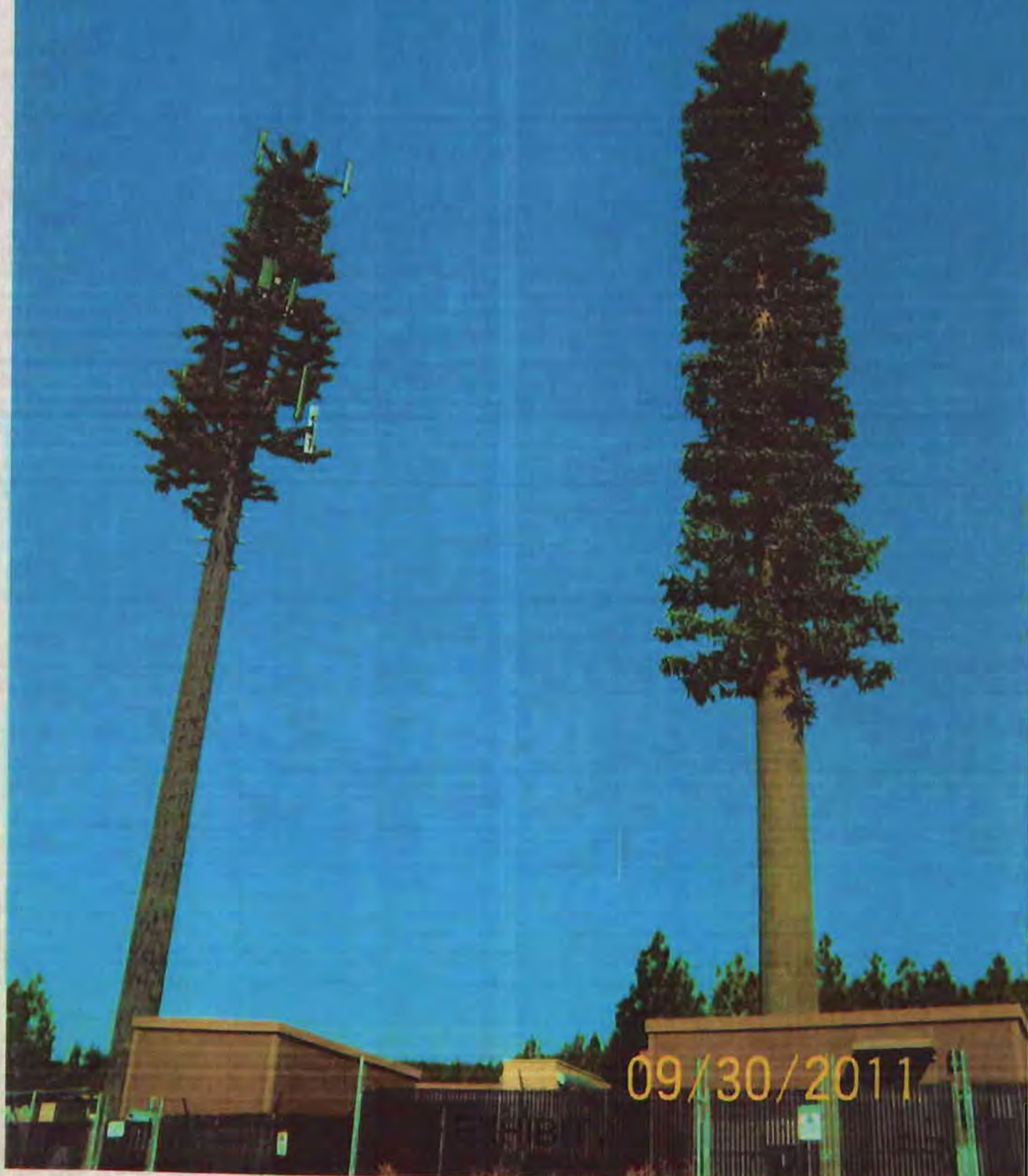
CONDITION OF MONOPINE IN FEBRUARY 2011

Photosimulation of proposed antenna improvements as seen up close from the equipment area.



Previsualists, Inc. all rights reserved. Any modification, alteration, cropping, copying or editing of any portion of this image is strictly prohibited and considered a violation of US copyright laws. This photosimulation is based upon information provided by the project applicant. Questions or comments? call 1-877-799-3210 or visit www.previsualists.com

SITE VISIT SEPTEMBER 30, 2011.
BRANCHES MISSING AND ANTENNAS VISIBLE.



09/30/2011

SITE VISIT OCTOBER 17, 2011. ANTENNAS VISIBLE.



EXHIBIT K

SITE VISIT NOVEMBER 7, 2012- ANTENNA SOCKS PROVIDED





11/7/12
03/20/2004



11/7/12
03/20/2004



1117/12

~~03/20/2004~~