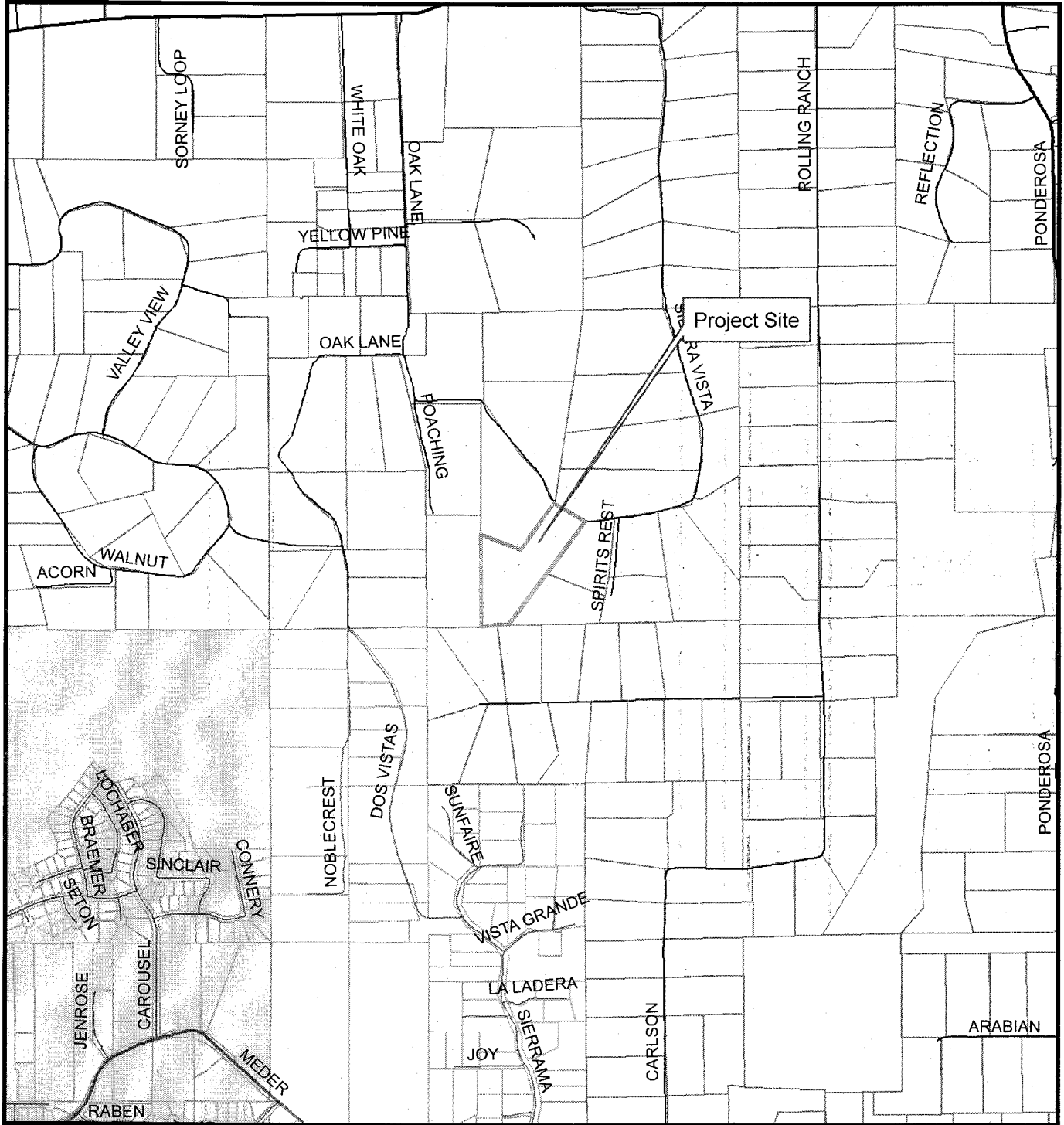
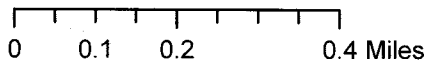


# Location Map



Z09-0010/P09-0014-DeVile

APN-070-131-16



1:15,000



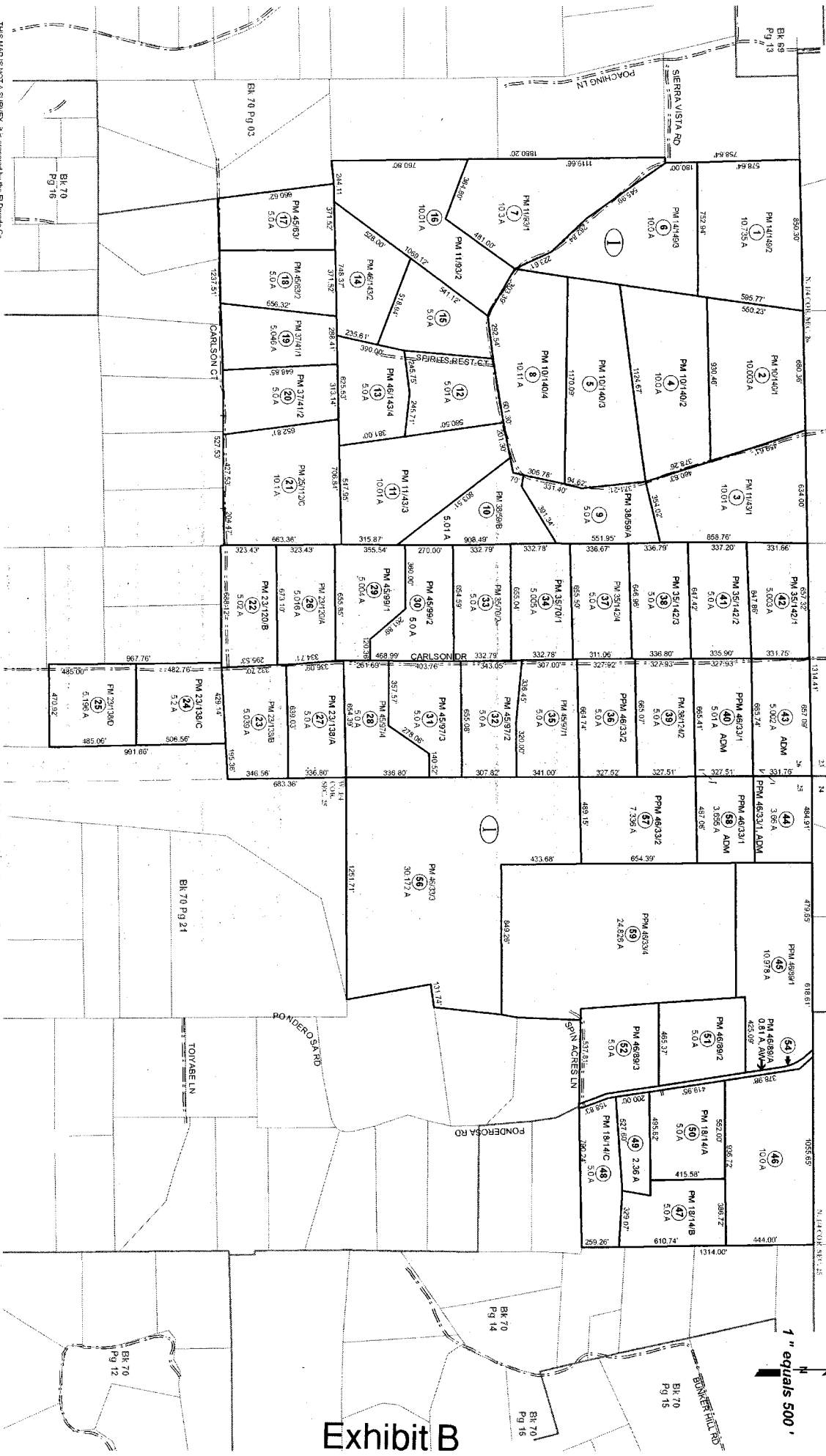
Prepared By:  
Gina Paolini  
Planning Services Department  
September 2, 2010

## Exhibit A

POR. SECS. 25 & 26, T.10N., R.9E., M.D.M.

70:13

1" equals 500'



THIS MAP (SOUTH A STREET) is prepared by the El Dorado Co. Assessor's Office. The map shows the location of the parcels and characteristics are not guaranteed. Users should verify items such as dimensions and acreage.

**Acreages Are Estimates**

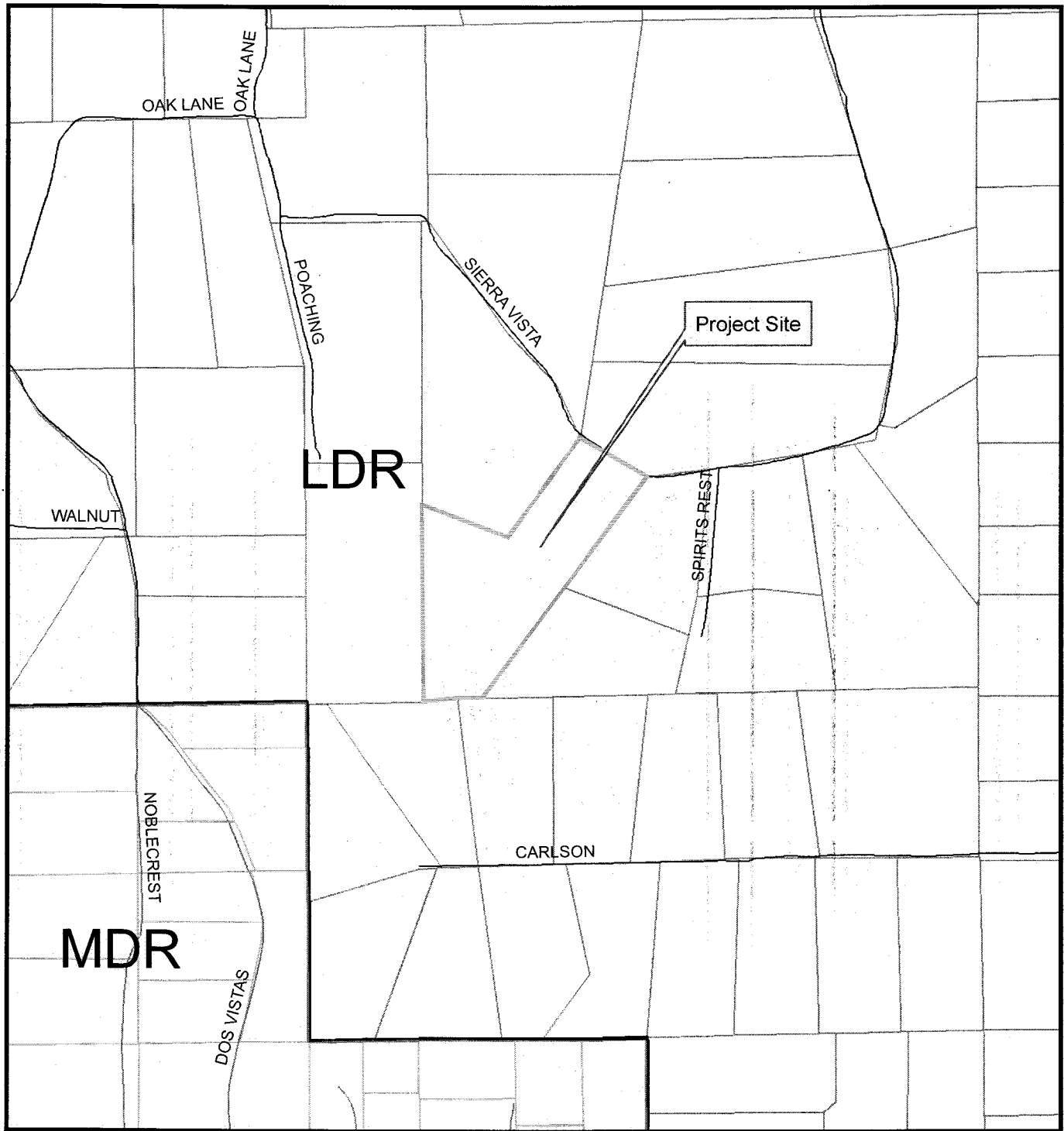
Adjacent Map Pages Shown in Grey Tint  
Assessor's Block Numbers Shown in Red  
Assessor's Section Numbers Shown in Green

Rev2, Jan. 2, 2007

Assessor's Map Bk. 070, Pg. 13  
County of El Dorado, CA

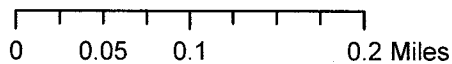
**Exhibit B**

# General Plan Map



Z09-0010/P09-0014-DeVile

APN-070-131-16



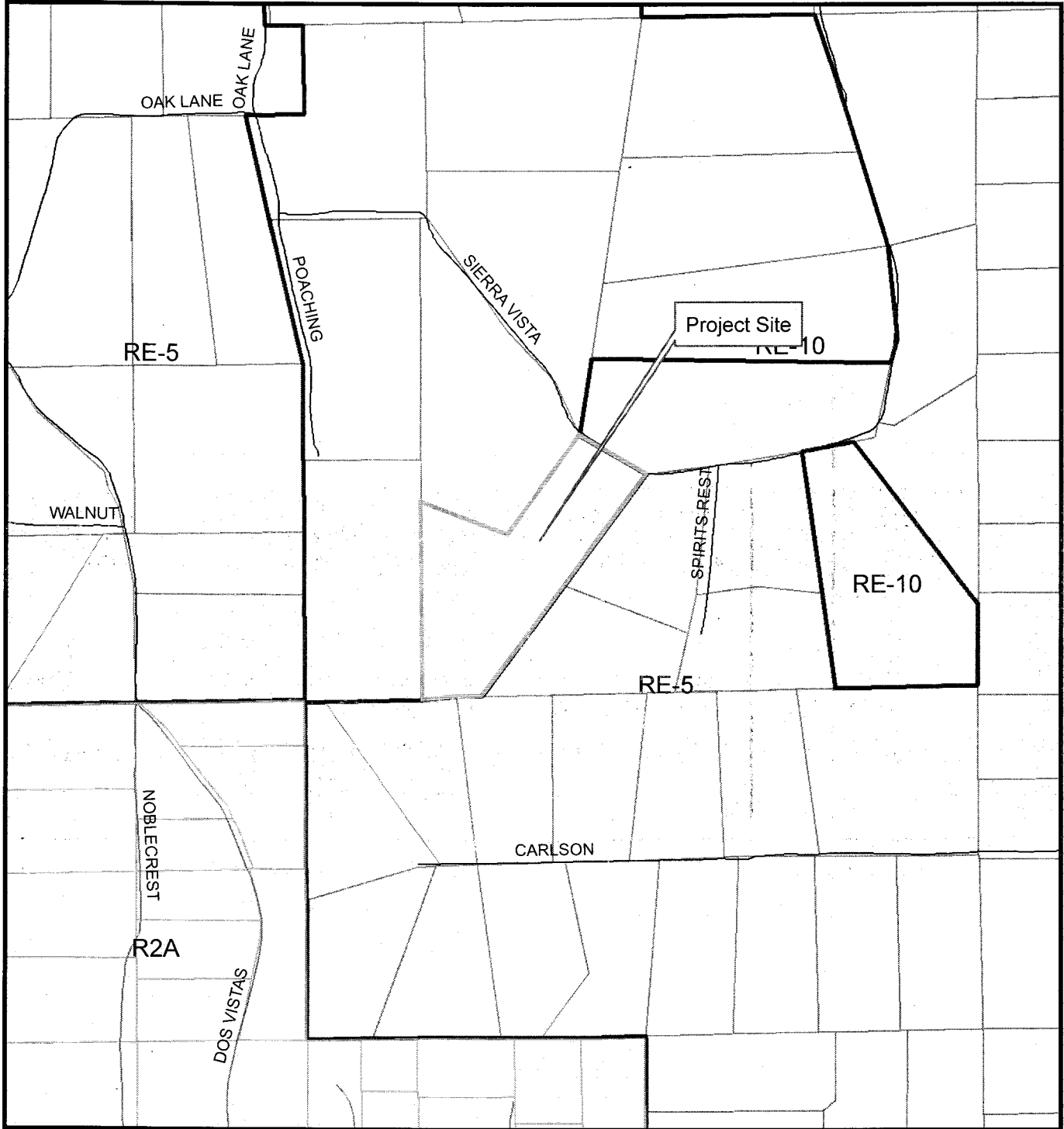
Land Use Designation  
LDR - Low Density Residential  
MDR - Medium Density Residential

1:7,000

Prepared By:  
Gina Paolini  
Planning Services Department  
September 2, 2010

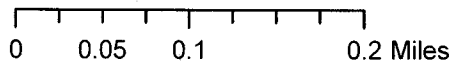
## Exhibit C

# Zoning Map



Z09-0010/P09-0014-DeVile

APN-070-131-16



Zoning Districts  
RE-10- Estate Residential  
RE-5 - Estate Residential Five-Acre

1:7,000

Prepared By:  
Gina Paolini  
Planning Services Department  
September 2, 2010

## Exhibit D

