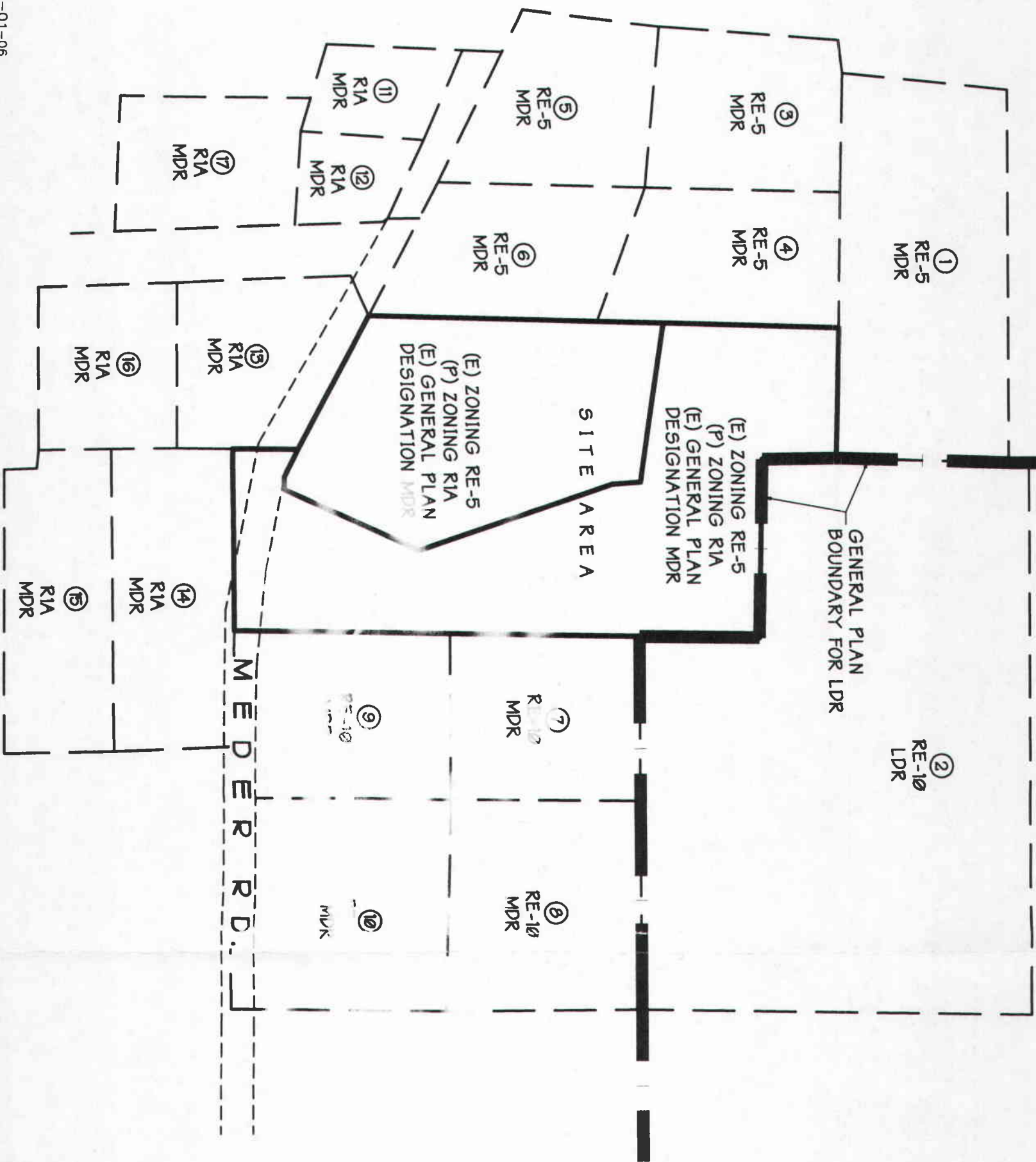


Exhibit



SHOWING GENERAL PLAN DESIGNATION & SURROUNDING AREAS
FOR REZONE APPLICATION # ZA298-17 FROM RE-5 TO RIA
APRIL 2008



| A.P.N.# | AREA |
|---------------------|-------------|
| ① A.P.N. 070-180-43 | 2.132 ACRES |
| ② A.P.N. 070-101-39 | 6.38 ACRES |
| ③ A.P.N. 070-062-91 | 1.03 ACRES |
| ④ A.P.N. 070-062-90 | 1.00 ACRES |
| ⑤ A.P.N. 070-062-92 | 1.03 ACRES |
| ⑥ A.P.N. 070-062-89 | 1.043 ACRES |
| ⑦ A.P.N. 070-101-43 | 1.081 ACRES |
| ⑧ A.P.N. 070-101-44 | 1.278 ACRES |
| ⑨ A.P.N. 070-101-45 | 1.217 ACRES |
| ⑩ A.P.N. 070-101-46 | 1.442 ACRES |
| ⑪ A.P.N. 070-062-69 | 0.41 ACRES |
| ⑫ A.P.N. 070-101-70 | 0.288 ACRES |
| ⑬ A.P.N. 070-172-46 | 1.03 ACRES |
| ⑭ A.P.N. 070-072-01 | 1.00 ACRES |
| ⑮ A.P.N. 070-072-02 | 1.00 ACRES |
| ⑯ A.P.N. 070-172-47 | 0.883 ACRES |
| ⑰ A.P.N. 070-172-54 | 0.85 ACRES |

CARLTON
Engineering Inc.

3883 Ponderosa Road, Shingler Springs, CA 95682
Voice 530.677.5515 Fax 530.677.8645

