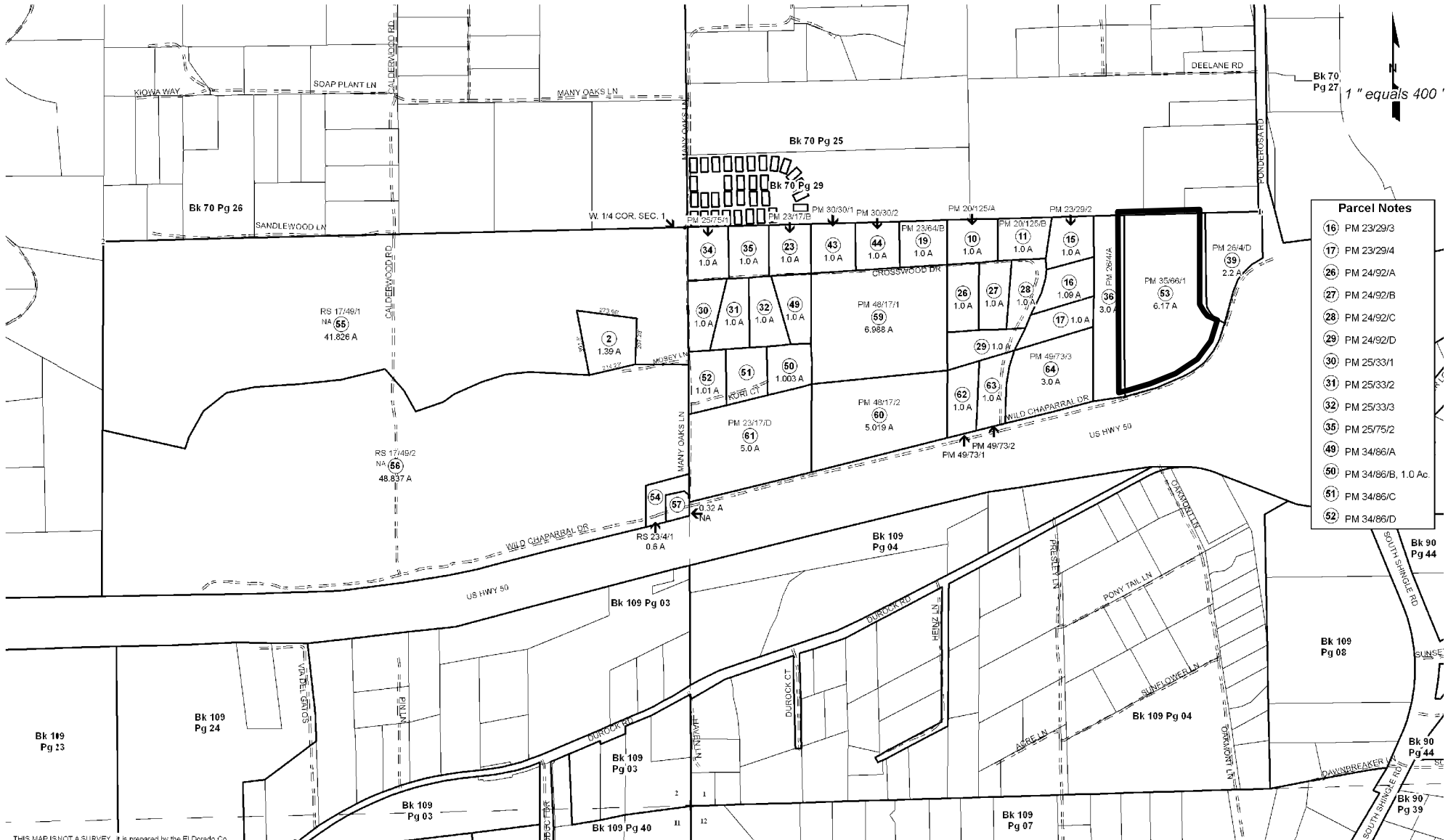


POR. NE. 1/4 SEC. 2 & POR. NW. 1/4 SEC. 1, T.9N., R.9E., M.D.M.

70:28



Parcel Notes

- (16) PM 23/29/3
- (17) PM 23/29/4
- (26) PM 24/92/A
- (27) PM 24/92/B
- (28) PM 24/92/C
- (29) PM 24/92/D
- (30) PM 25/33/1
- (31) PM 25/33/2
- (32) PM 25/33/3
- (36) PM 25/75/2
- (49) PM 34/86/A
- (50) PM 34/86/B, 1.0 Ac.
- (51) PM 34/86/C
- (52) PM 34/86/D

THIS MAP IS NOT A SURVEY. It is prepared by the El Dorado Co. Assessor's office for assessment purposes only. Area calculations and characteristics are not guaranteed. Users should verify items such as dimensions and acreage.

Acreages Are Estimates

Adjacent Map Pages Shown in Grey Text
Assessor's Parcel Numbers Shown in Circles

Rev. July 28, 2006

Assessor's Map Bk. 070, Pg. 28
County of El Dorado, CA