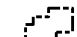







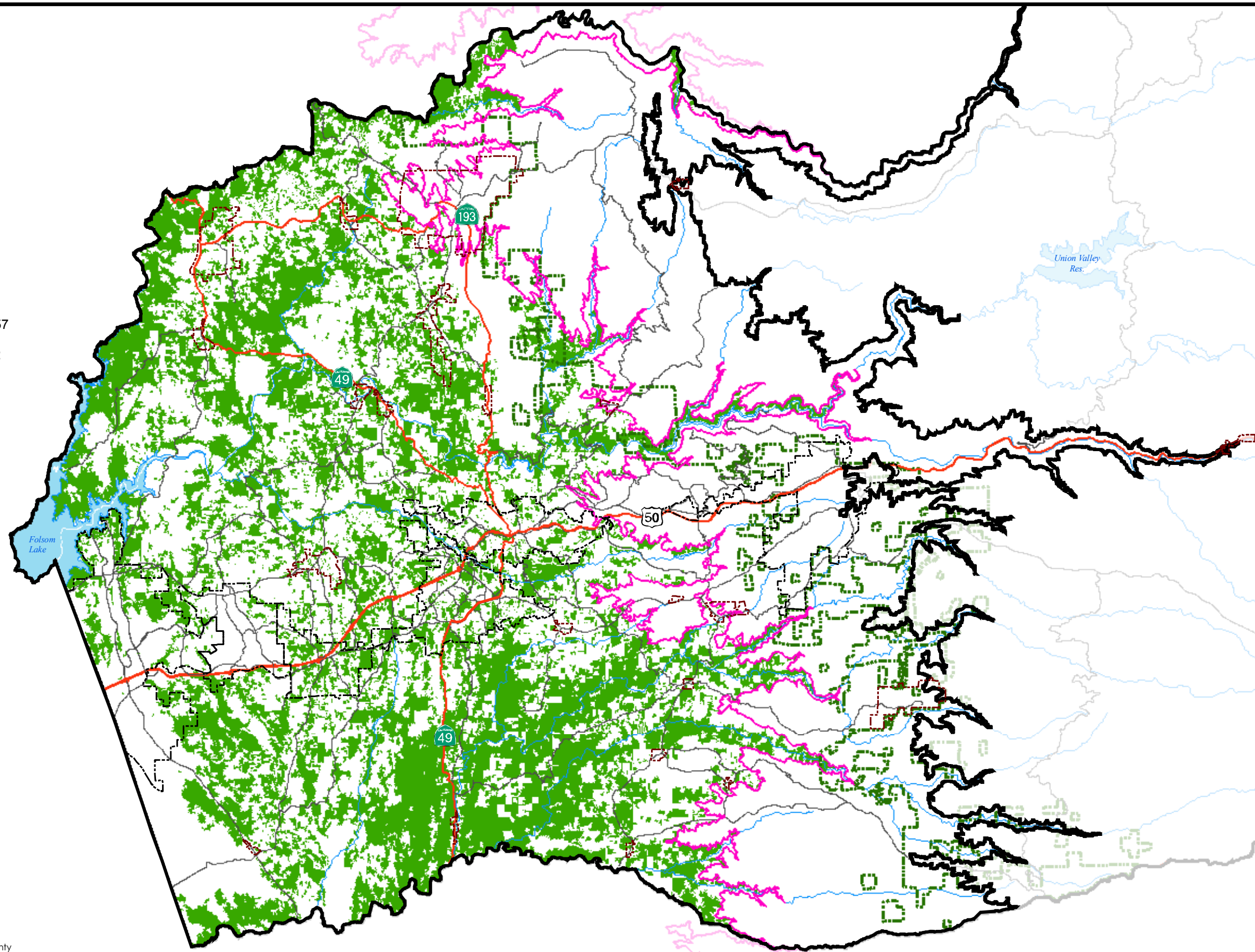


T:_GIS\El_Dorado_County\Mxd\OWMP\Feb2007\2500ft.mxd - 3/9/2007 @ 12:49:49 PM

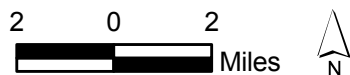
Legend

-  Community Regions
-  Rural Centers
-  OWMP Boundary
-  2500ft Contour
-  Highway
-  Arterial Road
-  Forest Service Boundary
-  Priority Conservation Areas

Total Acreage of 5 WHR Oak Woodland Types = 248,857
 Total Acreage of Priority Oak Woodland Conservation Areas = 125,212
 Contiguous Oak Woodland Block Acreage >= 500
 Map Study Area Elevation Boundary = 2,500 feet



Source: California Fire and Resource Assessment Program (FRAP); El Dorado County



Date: 03/14/07

Preliminary Draft

PRIORITY CONSERVATION AREAS (WITHOUT CORRIDORS)
BELOW 2500FT IN ELEVATION

