







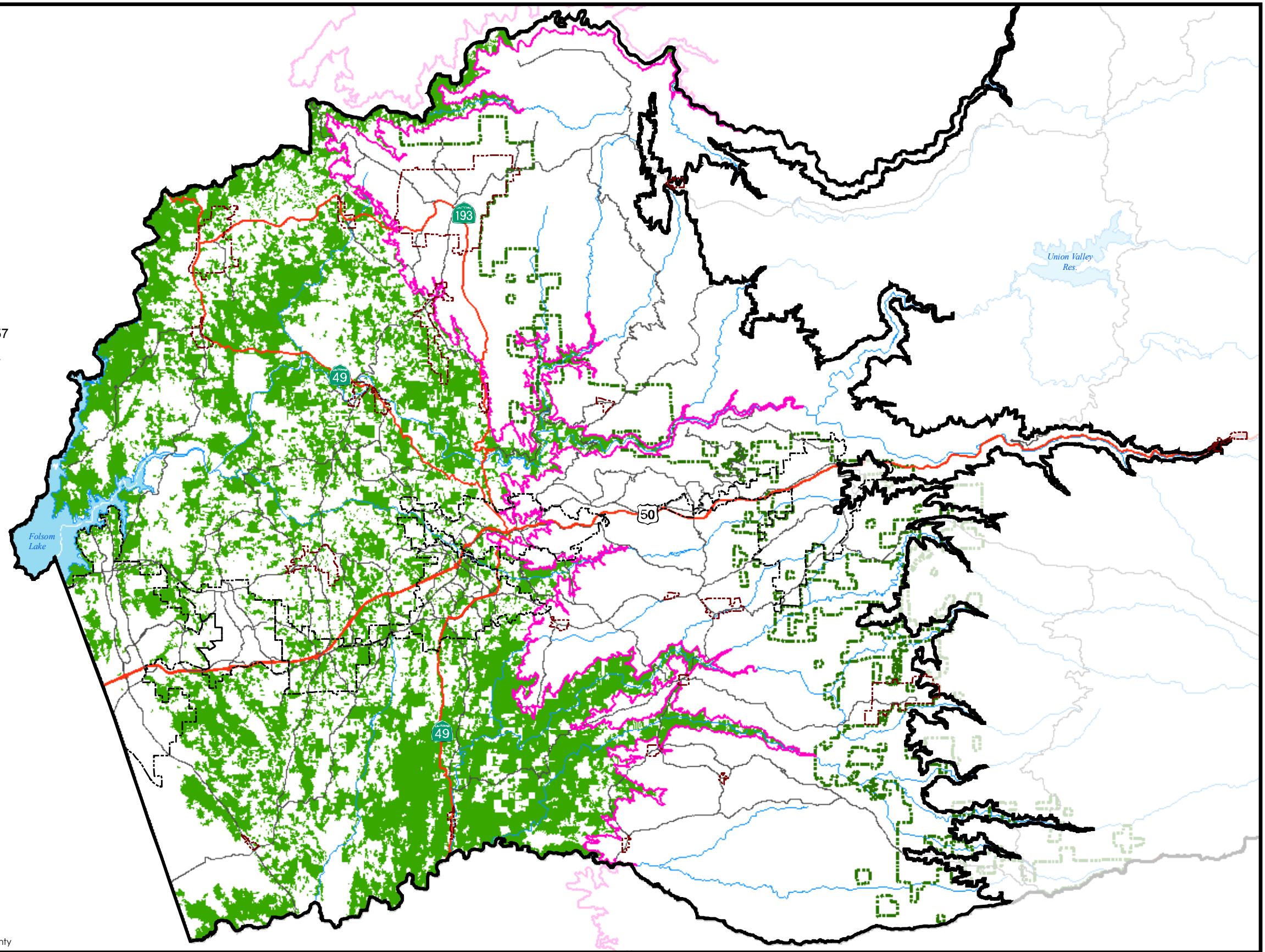


T:\GIS\El_Dorado_County\Mxd\OWMPP\Feb2007\2000ft.mxd - 3/9/2007 @ 12:53:41 PM

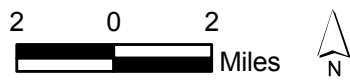
Legend

-  Community Regions
-  Rural Centers
-  OWMP Boundary
-  2000ft Contour
-  Highway
-  Arterial Road
-  Forest Service Boundary
-  Important Oak Woodland Habitat

Total Acreage of 5 WHR Oak Woodland Types = 248,857
 Total Acreage of Priority Oak
 Woodland Conservation Areas = 106,907
 Contiguous Oak Woodland Block Acreage >= 500
 Map Study Area Elevation Boundary = 2,000 feet



Source: California Fire and Resource Assessment Program (FRAP); El Dorado County



Date: 03/14/07

Preliminary Draft

PRIORITY CONSERVATION AREAS (WITHOUT CORRIDORS)
BELOW 2000FT IN ELEVATION

