

TYPICAL RAMP CLOSURES

LEGEND

- Traffic Cone
- † Temporary Sign
- ‡ Barricades
- ← Direction of Travel
- ↪ Turn Arrow

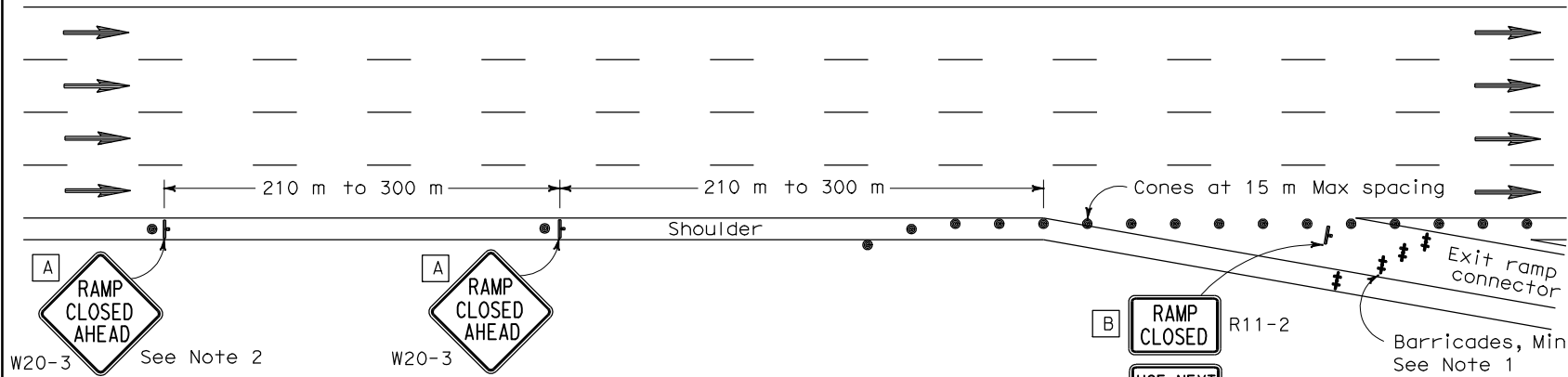
SIGN PANEL SIZE (Min)

- A 1200 mm x 1200 mm
- B 1200 mm x 750 mm
- C 750 mm x 750 mm
- D 762 mm x 762 mm
- E 900 mm x 900 mm
- F 1219 mm x 914 mm

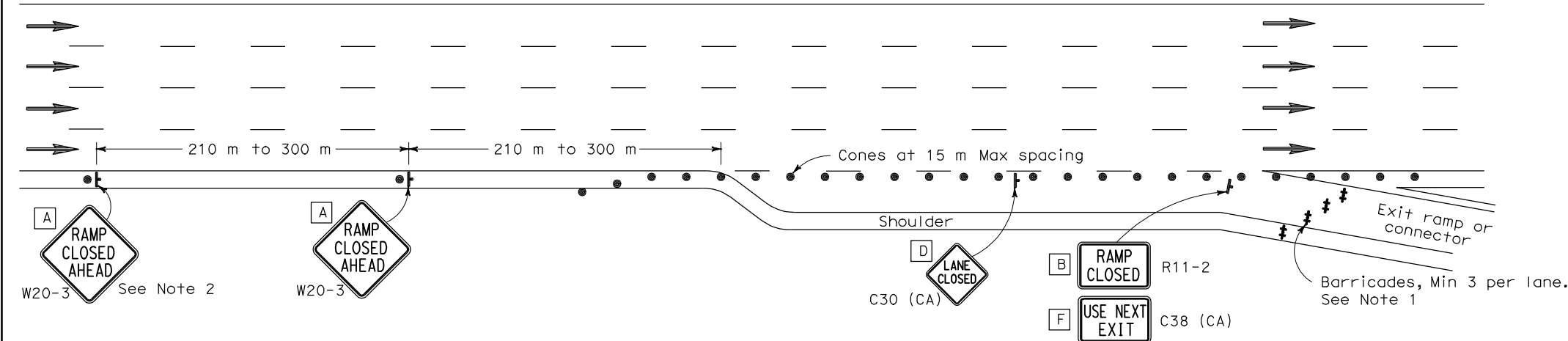


DIST	COUNTY	ROUTE	KILOMETER POST TOTAL PROJECT	SHEET NO.	TOTAL SHEETS

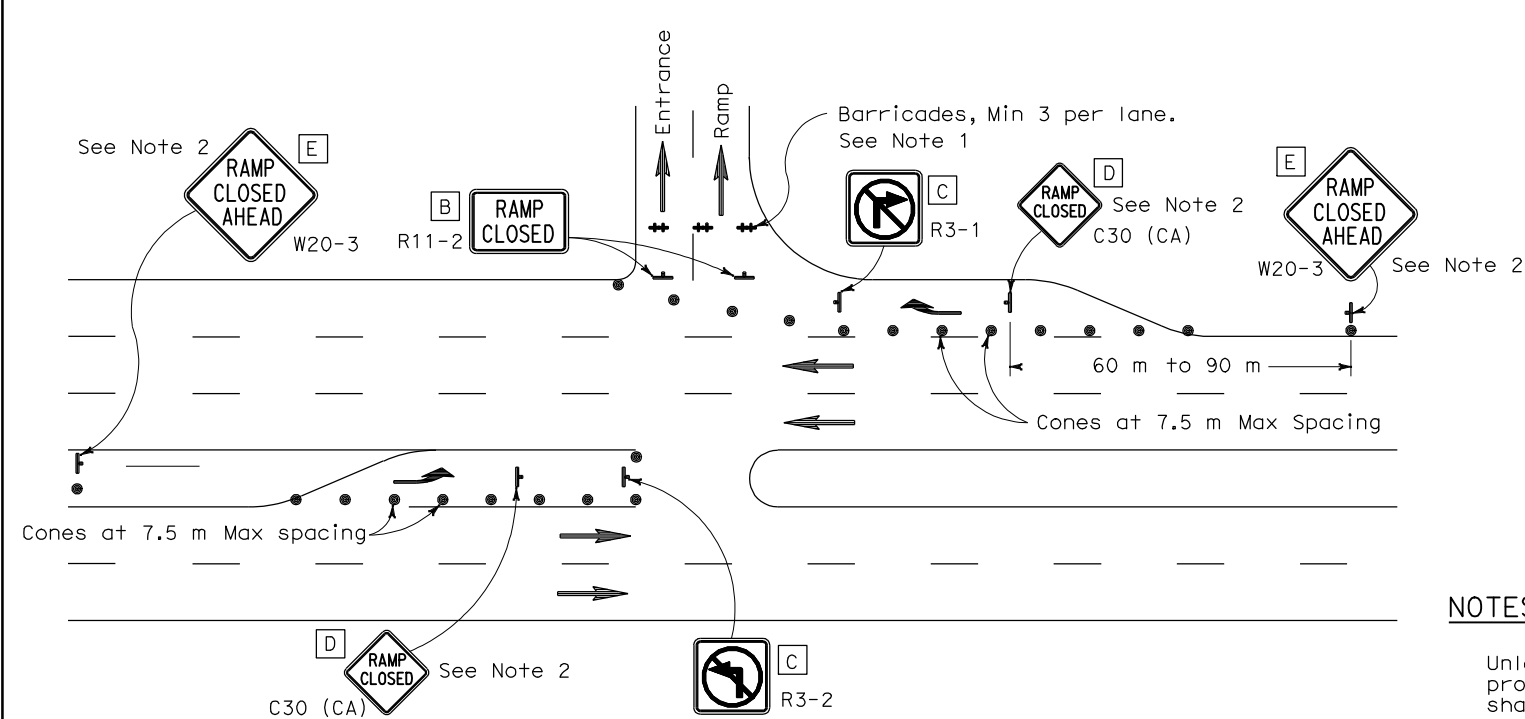
Greg W. Edwards
 REGISTERED CIVIL ENGINEER
 April 28, 2005
 PLANS APPROVAL DATE
The State of California or its officers or agents shall not be responsible for the accuracy or completeness of electronic copies of this plan sheet.
 To get to the Caltrans web site, go to: <http://www.dot.ca.gov>



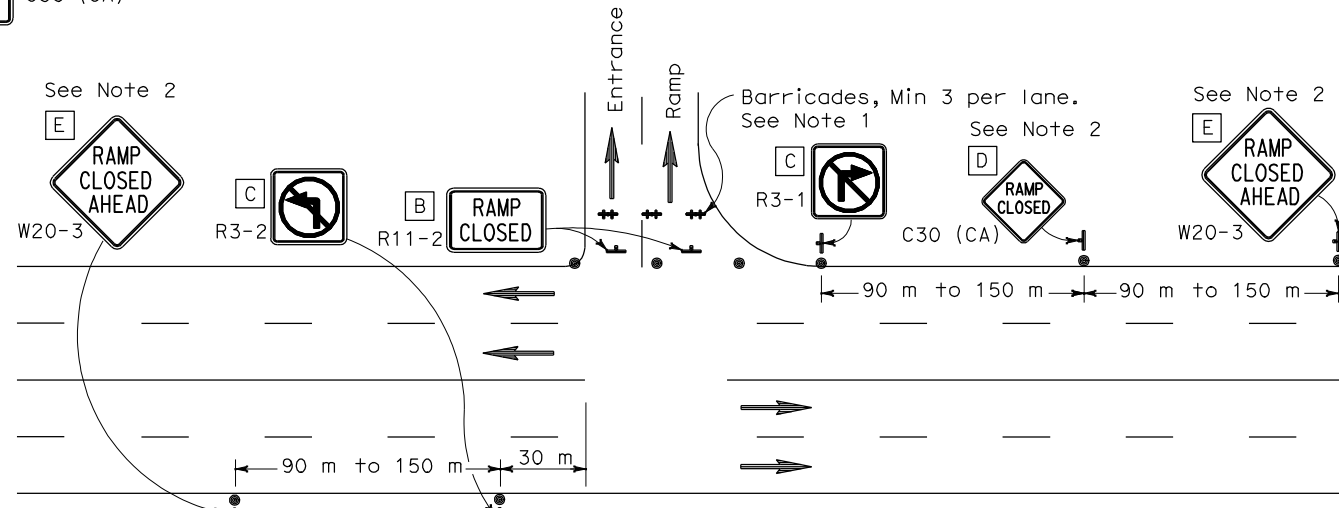
EXIT RAMP OR CONNECTOR



EXIT RAMP OR CONNECTOR WITH ADDITIONAL LANE



ENTRANCE RAMP WITH TURNING POCKETS



ENTRANCE RAMP WITHOUT TURNING POCKETS

NOTES

1. Unless otherwise specified in the special provisions, all temporary warning signs shall have black legend on orange background.
2. California code are designated by (CA). Otherwise, Federal codes are shown.

NOTES

1. Barricades shall be Type I, II, or III for closures lasting one week or less and Type III for closures lasting longer than one week.
2. Instead of placing the W20-3 "RAMP CLOSED AHEAD" and C30 (CA) "RAMP CLOSED" signs, black on orange overlay plates with the word "CLOSED" may be mounted, as directed by the Engineer, on all guide signs that refer to the closed ramp. The letter size on the overlay shall be the same as the guide sign.
3. Each advance W20-3 "RAMP CLOSED AHEAD" sign shall be equipped with at least two flags for daytime closure. Each flag shall be at least 400 mm x 400 mm in size and shall be orange or fluorescent red-orange in color.
4. All cones used for ramp closures during the hours of darkness shall be fitted with retroreflective bands (or sleeves) as specified in the specifications.
5. Portable delineators, placed at one-half the spacing indicated for traffic cones, may be used instead of cones for daytime ramp closures only.
6. At least one person shall be assigned to provide full time maintenance of traffic control devices, unless otherwise directed by the Engineer.
7. The existing "EXIT" sign in the gore area shall be covered during ramp closures.

STATE OF CALIFORNIA
DEPARTMENT OF TRANSPORTATION

TRAFFIC CONTROL SYSTEM FOR RAMP CLOSURE

NO SCALE
ALL DIMENSIONS ARE IN MILLIMETERS UNLESS OTHERWISE SHOWN
RSP T14 DATED APRIL 28, 2005 SUPERSEDES STANDARD PLAN T14 DATED JULY 1, 2004-PAGE 223 OF THE STANDARD PLANS BOOK DATED JULY 2004.

REVISED STANDARD PLAN RSP T14

2004 REVISED STD PLAN RSP T14

223