

NOTES

Unless otherwise specified in the special provisions, all temporary warning signs shall have black legend on orange background.

California code are designated by (CA). Otherwise, Federal codes are shown.

To accompany plans dated _____



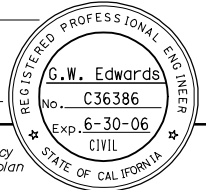
DIST	COUNTY	ROUTE	KILOMETER POST TOTAL PROJECT	SHEET NO.	TOTAL SHEETS

REGISTERED CIVIL ENGINEER

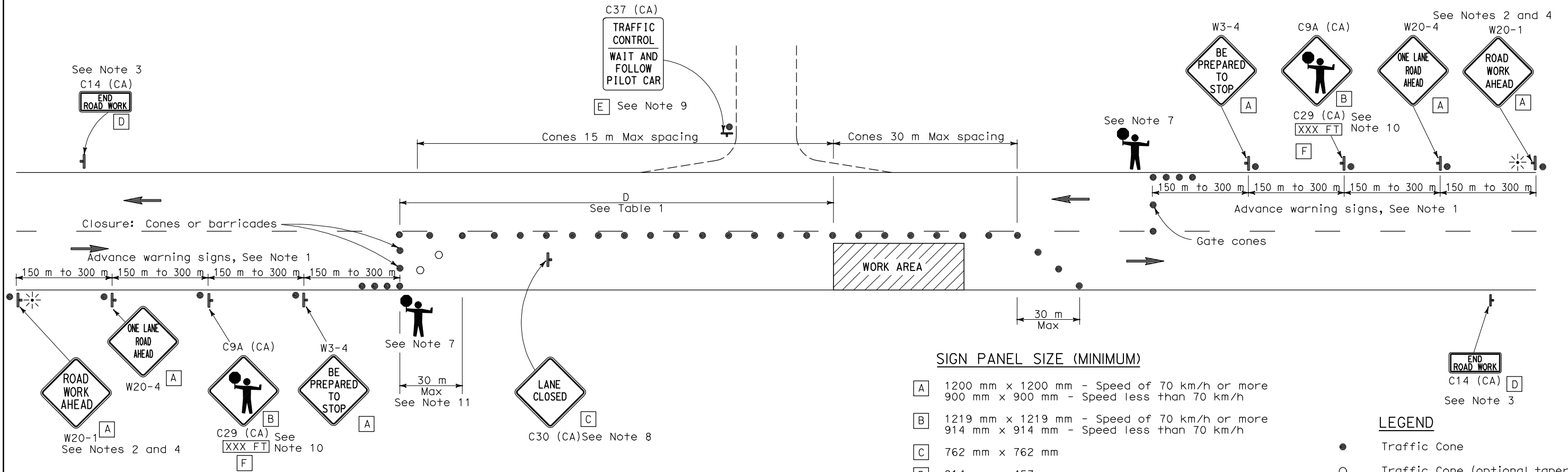
April 28, 2005
 PLANS APPROVAL DATE

The State of California or its officers or agents shall not be responsible for the accuracy or completeness of electronic copies of this plan sheet.

To get to the Caltrans web site, go to: <http://www.dot.ca.gov>



TYPICAL LANE CLOSURE WITH REVERSIBLE CONTROL



SIGN PANEL SIZE (MINIMUM)

- A 1200 mm x 1200 mm - Speed of 70 km/h or more
900 mm x 900 mm - Speed less than 70 km/h
- B 1219 mm x 1219 mm - Speed of 70 km/h or more
914 mm x 914 mm - Speed less than 70 km/h
- C 762 mm x 762 mm
- D 914 mm x 457 mm
- E 914 mm x 1067 mm
- F 914 mm x 229 mm

LEGEND

- Traffic Cone
- Traffic Cone (optional taper)
- † Temporary Sign
- ← Direction of Travel
- ☀ Portable Flashing Beacon
- 👤 Flagger

TABLE I

Approach Speed	Minimum D	Downgrade Minimum D *
km/h	m	m
30	60	72
40	60	72
50	60	72
60	90	108
70	90	108
80	150	180
90	150	180
100	150	180
110	170	204

* Use on substained downgrade steeper than -3 percent and longer than 1.6 km.

NOTES

- Where approach speeds are low, advance warning signs may be placed at 90 m spacing, and closer in urban areas.
- Each advance warning sign in each direction of travel shall be equipped with at least two flags for daytime closure. Each flag shall be at least 400 mm x 400 mm in size and shall be orange or fluorescent red-orange in color. Flashing beacons shall be placed at the locations indicated for lane closure during hours of darkness.
- A C14 (CA) "END ROAD WORK" sign, as appropriate, shall be placed at the end of the lane control unless the end of work area is obvious, or ends within a larger project's limits.
- If the W20-1 sign would follow within 600 m of a stationary W20-1 or C11 (CA) "ROAD WORK NEXT _____ MILES", use a C16 (CA) sign for the first advance warning sign.
- All cones used for lane closures during the hours of darkness shall be fitted with retroreflective bands (or sleeves) as specified in the specifications.
- Portable delineators, placed at one-half the spacing indicated for traffic cones, may be used instead of cones for daytime closures only.
- Additional advance flaggers may be required. Flagger should stand in a conspicuous place, be visible to approaching traffic as well as approaching vehicles after the first vehicle has stopped. During the hours of darkness, the flagging-station and flagger shall be illuminated and clearly visible to approaching traffic. The illumination footprint of the lighting on the ground shall be at least 6 m in diameter. Place a minimum of four cones at 15 m intervals in advance of flagger station as shown.
- Place C30 (CA) "LANE CLOSED" sign at 150 to 300 m intervals throughout extended work areas. They are optional if the work area is visible from the flagger station.
- When a pilot car is used, place a C37 (CA) "TRAFFIC CONTROL-WAIT AND FOLLOW PILOT CAR" sign at all intersections within traffic control area. Signs shall be clean and visible at all times.
- An optional C29 (CA) sign may be placed below the C9A (CA) sign.
- Traffic cones or barricades may be placed on the optional taper as shown, barricades shall be Type I, II, or III.

TRAFFIC CONTROL SYSTEM FOR LANE CLOSURE ON TWO LANE CONVENTIONAL HIGHWAYS

NO SCALE
 ALL DIMENSIONS ARE IN MILLIMETERS UNLESS OTHERWISE SHOWN
 RSP T13 DATED APRIL 28, 2005 SUPERSEDES STANDARD PLAN T13 DATED JULY 1, 2004-PAGE 222 OF THE STANDARD PLANS BOOK DATED JULY 2004.

REVISED STANDARD PLAN RSP T13