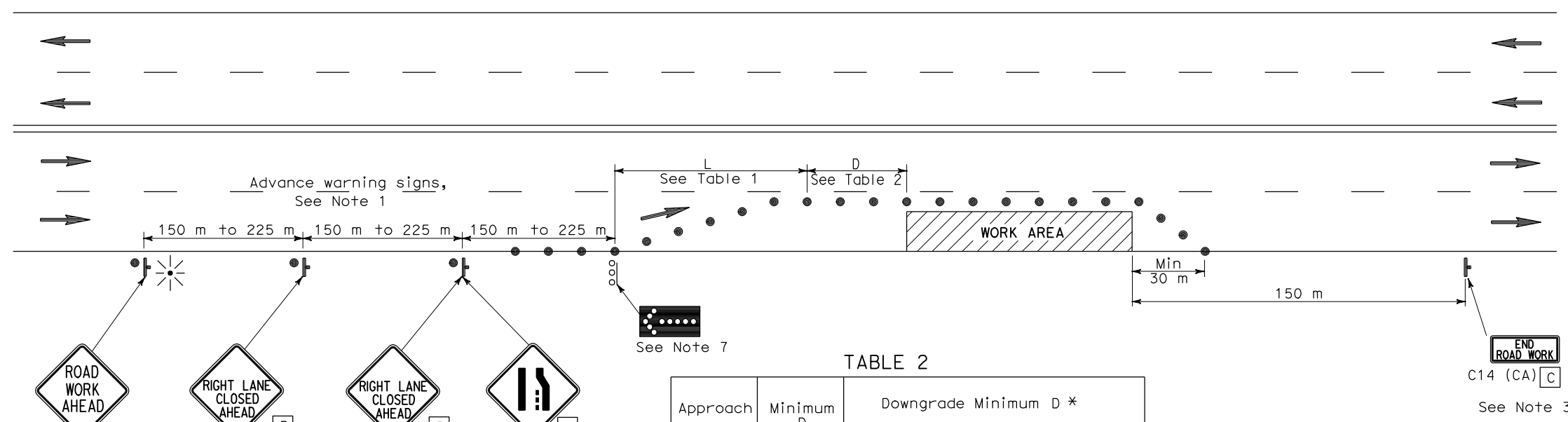




### TYPICAL LANE CLOSURE

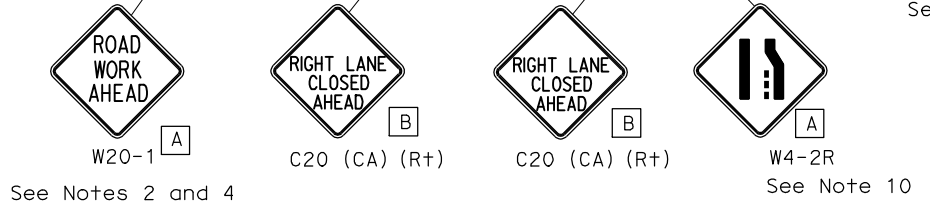
|      |        |       |                              |           |              |
|------|--------|-------|------------------------------|-----------|--------------|
| DIST | COUNTY | ROUTE | KILOMETER POST TOTAL PROJECT | SHEET NO. | TOTAL SHEETS |
|      |        |       |                              |           |              |

REGISTERED CIVIL ENGINEER  
 April 28, 2005  
 PLANS APPROVAL DATE  
 The State of California or its officers or agents shall not be responsible for the accuracy or completeness of electronic copies of this plan sheet.  
 To get to the Caltrans web site, go to: <http://www.dot.ca.gov>



**NOTES**

Unless otherwise specified in the special provisions, all temporary warning signs shall have black legend on orange background.  
 California code are designated by (CA). Otherwise, Federal codes are shown.



**TABLE 2**

| Approach Speed | Minimum D | Downgrade Minimum D * |     |     |
|----------------|-----------|-----------------------|-----|-----|
|                |           | -3%                   | -6% | -9% |
| 30             | 45        | 45                    | 45  | 45  |
| 40             | 45        | 50                    | 50  | 53  |
| 50             | 45        | 66                    | 70  | 74  |
| 60             | 45        | 87                    | 92  | 97  |
| 70             | 65        | 110                   | 116 | 124 |
| 80             | 85        | 136                   | 144 | 154 |

\* Use on sustained downgrade steeper than or equal to grades shown and longer than 1.6 km.

**SIGN PANEL SIZE (Min)**

- A 900 mm x 900 mm
- B 914 mm x 914 mm
- C 914 mm x 457 mm

**LEGEND**

- Traffic Cone
- † Temporary Sign
- ← Direction of Travel
- ⋯ Flashing Arrow Sign (FAS)
- ⋯ FAS Support or Trailer
- ⊛ Portable Flashing Beacon

**NOTES**

- Where approach speeds are low, advance warning signs may be placed at 90 m spacing and placed closer in urban areas.
- Each advance warning sign shall be equipped with at least two flags for daytime closure. Each flag shall be at least 400 mm x 400 mm in size and shall be orange or fluorescent red-orange in color. Flashing beacons shall be placed at the locations indicated for lane closure during hours of darkness.
- A C14 (CA) "END ROAD WORK" sign, as appropriate, shall be placed at the end of the lane closure unless the end of work area is obvious, or ends within a larger project's limits.
- If the W20-1 sign would follow within 600 m of a stationary W20-1 or C11 (CA) "ROAD WORK NEXT MILES", use a C20 (CA) sign for the first advance warning sign.
- All cones used for lane closures during the hours of darkness shall be fitted with retroreflective bands (or sleeves) as specified in the specifications.
- Portable delineators, placed at one-half the spacing indicated for traffic cones, may be used instead of cones for daytime closures only.
- Flashing arrow sign shall be either Type I or Type II.
- The maximum spacing between cones along a tangent shall be 15 m and along a taper shall be approximately as shown in Table 1.
- For approach speeds over 80 km/h, use the "Traffic Control System for Lane Closure On Freeways And Expressways" plan for lane closure details and requirements.
- When specified in the special provisions, a W4-2 "LANE ENDS" symbol sign is to be used in place of the C20 (CA) "RIGHT LANE CLOSED AHEAD" sign.

**TABLE 1**

| Approach Speed | * Minimum L | ** Max spacing of cones along taper |
|----------------|-------------|-------------------------------------|
| km/h           | m           | m                                   |
| 30             | 38          | 6                                   |
| 40             | 38          | 8                                   |
| 50             | 98          | 10                                  |
| 60             | 98          | 12                                  |
| 70             | 183         | 14                                  |
| 80             | 183         | 15                                  |
| Over 80        | See Note 9  |                                     |

\* Use L for lane widths less than or equal to 3.6 m.  
 \*\* See Note 8

STATE OF CALIFORNIA  
 DEPARTMENT OF TRANSPORTATION  
**TRAFFIC CONTROL SYSTEM  
 FOR LANE CLOSURE ON  
 MULTILANE CONVENTIONAL  
 HIGHWAYS**

NO SCALE  
 ALL DIMENSIONS ARE IN  
 MILLIMETERS UNLESS OTHERWISE SHOWN

RSP T11 DATED APRIL 28, 2005 SUPERSEDES STANDARD PLAN T11  
 DATED JULY 1, 2004-PAGE 220 OF THE STANDARD PLANS BOOK DATED JULY 2004.

**REVISED STANDARD PLAN RSP T11**