



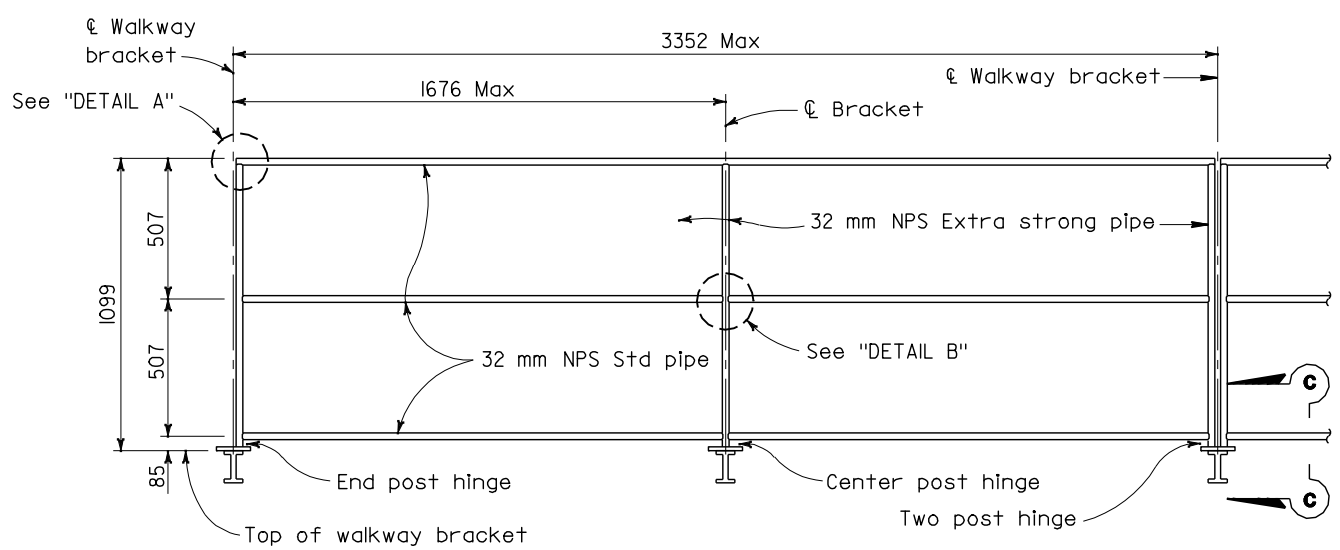
DIST	COUNTY	ROUTE	KILOMETER POST TOTAL PROJECT	SHEET NO.	TOTAL SHEETS

REGISTERED CIVIL ENGINEER
Tillat Sattar
 No. C42892
 Exp 03-31-2006
 CIVIL
 STATE OF CALIFORNIA

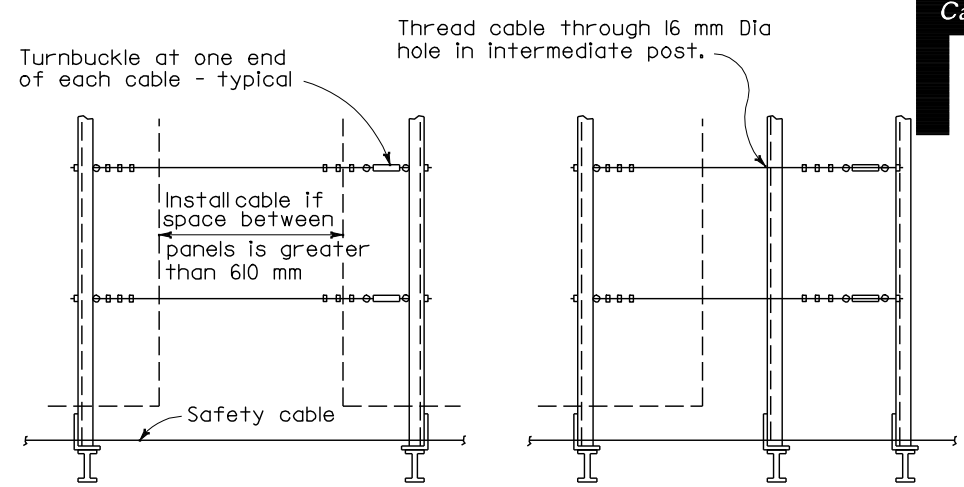
January 24, 2005
 PLANS APPROVAL DATE

The State of California or its officers or agents shall not be responsible for the accuracy or completeness of electronic copies of this plan sheet.

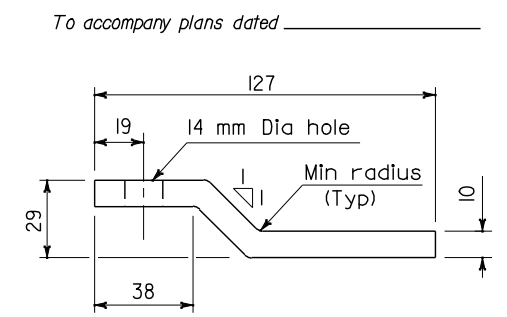
To get to the Caltrans web site, go to: <http://www.dot.ca.gov>



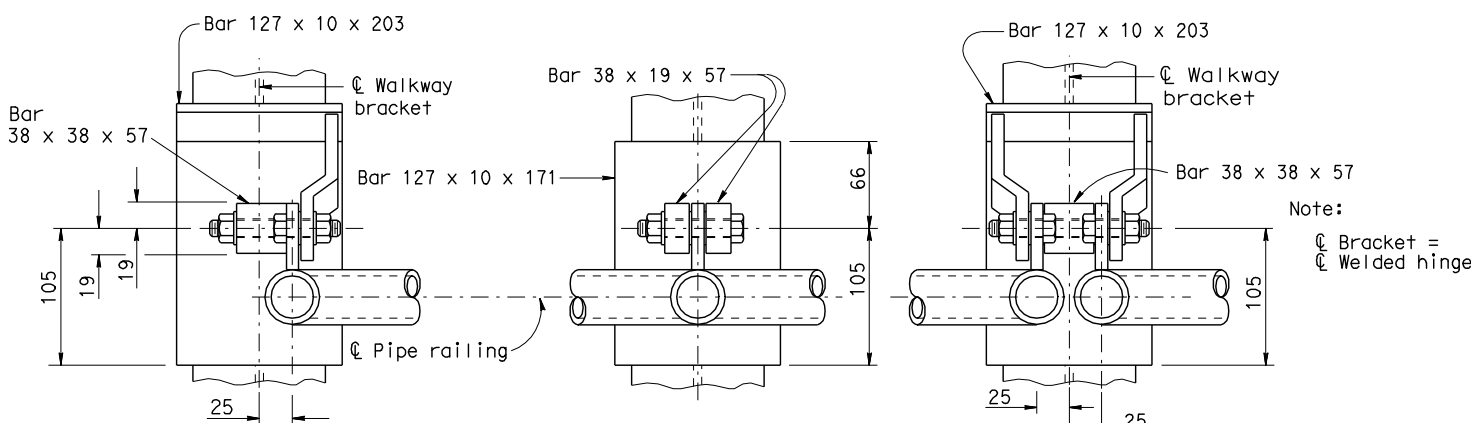
SAFETY RAILING ELEVATION



UPPER SAFETY CABLE ELEVATION
 BETWEEN PANELS BEYOND PANELS
 For tubular structures



PLAN - KICKER BAR

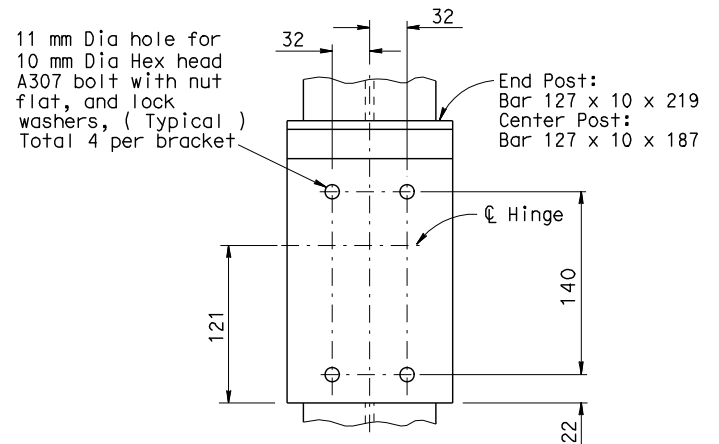


END POST

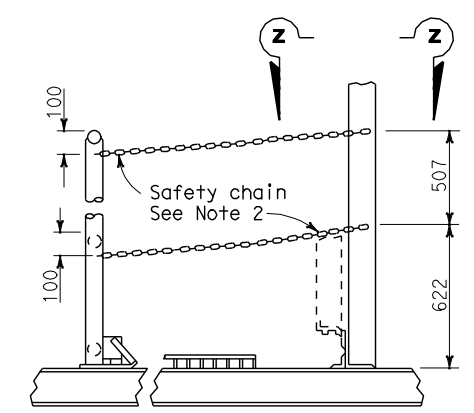
CENTER POST WELDED HINGE - PLAN

TWO POST

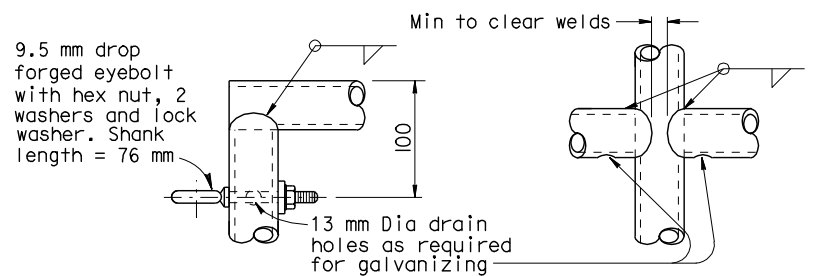
Note:
 ☉ Bracket =
 ☉ Welded hinge



TYPICAL BOLTED (ALTERNATIVE) HINGED CONNECTION



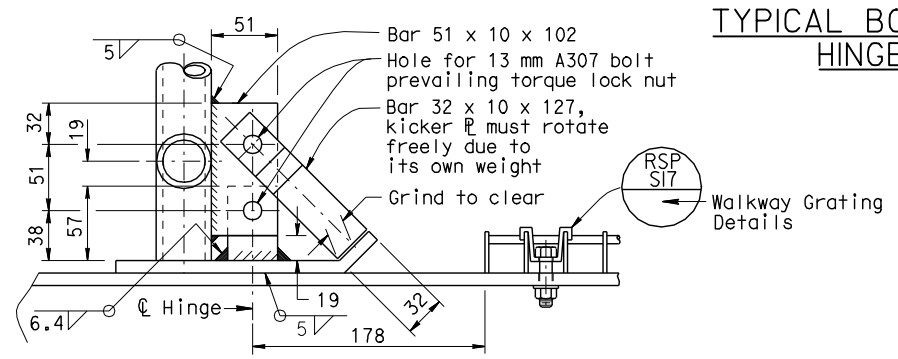
CHAIN ASSEMBLY



DETAIL A

DETAIL B

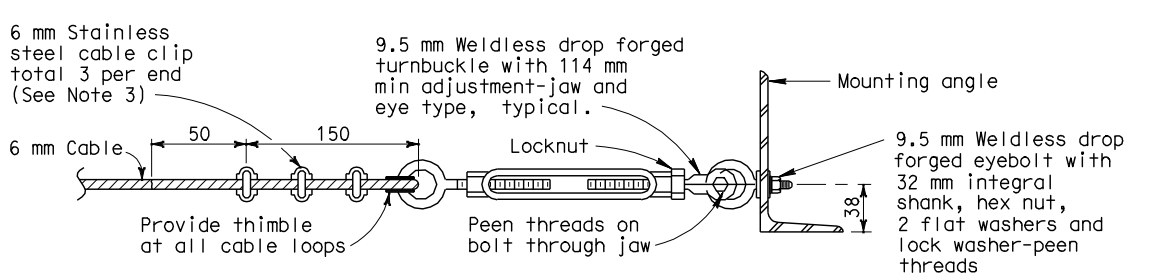
Note: Alternative venting methods may be used if approved by the Engineer.



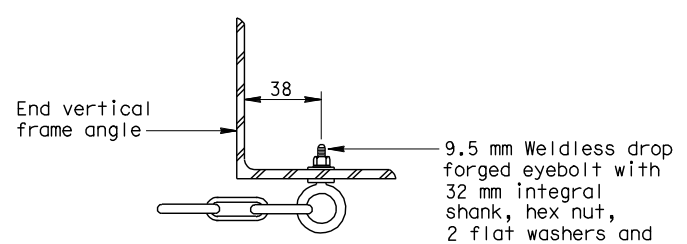
DETAIL C

NOTES

- Special care shall be taken to insure that the complete hinge and latch assembly will hold the safety railing in a steady manner, free of wobble while in the raised position. Maximum allowable displacement from vertical at top of railing when latched shall be 12 mm.
- Safety chain shall be 9.5 mm galvanized steel coil chain, approximately 39.4 links per meter. Length shall be minimum which allows lock-up of safety railing. Minimum of two safety chains per safety railing. Material shall be Grade 43 high test chain ASTM A413.
- Cable clips shall be installed according to manufacturer's recommendation.



TURNBUCKLE DETAILS



VIEW Z-Z

STATE OF CALIFORNIA
 DEPARTMENT OF TRANSPORTATION

OVERHEAD SIGNS WALKWAY SAFETY RAILING DETAILS

NO SCALE
 ALL DIMENSIONS ARE IN MILLIMETERS UNLESS OTHERWISE SHOWN

RSP S18 DATED JANUARY 24, 2005 SUPERSEDES STANDARD PLAN S18 DATED JULY 1, 2004-PAGE 327 OF THE STANDARD PLANS BOOK DATED JULY 2004.

REVISED STANDARD PLAN RSP S18