

INSTRUCTIONS TO FABRICATOR

PROJECT PLANS SHOW:

1. Sign structure location.
2. Length of structure frame.
3. Panel size and locations on structure.
4. Walkway length for two post signs.
5. Post type and height to bottom of frame.
6. Base plate elevation.
7. Footing elevation or location of pile foundation.
8. Photoelectric unit location if required.

REFER TO THE FOLLOWING STANDARD PLANS FOR DETAILS NOT SHOWN ON PROJECT PLANS:

Sheet # SHEET NAME

- RSP S1 Overhead Signs-Truss, Instructions and Examples
- RSP S2 Overhead Signs-Truss, Single Post Type, Post Types II to IX
- RSP S3 Overhead Signs-Truss, Single Post Type, Base Plate and Anchorage Details
- RSP S4 Overhead Signs-Truss, Single Post Type, Structural Frame Members Details No. 1
- RSP S5 Overhead Signs-Truss, Single Post Type, Structural Frame Members Details No. 2
- RSP S6 Overhead Signs-Truss, Gusset Plate Details
- RSP S7 Overhead Signs-Truss, Single Post Type, Square Pedestal Pile Foundation
- RSP S8 Overhead Signs-Truss, Single Post Type, Round Pedestal Pile Foundation
- RSP S9 Overhead Signs-Truss, Two Post Type, Post Types I-S through VII-S
- RSP S10 Overhead Signs-Truss, Two Post Type, Base Plate and Anchorage Details
- RSP S11 Overhead Signs-Truss, Two Post Type, Structural Frame Members
- RSP S12 Overhead Signs-Truss, Structural Frame Details
- RSP S13 Overhead Signs-Truss, Frame Juncture Details
- RSP S14 Overhead Signs-Truss, Two Post Type, Square Pedestal Pile Foundation
- RSP S15 Overhead Signs-Truss, Two Post Type, Round Pedestal Pile Foundation
- RSP S16 Overhead Signs, Walkway Details No. 1
- RSP S17 Overhead Signs, Walkway Details No. 2
- NSP S17A Overhead Signs, Walkway Details No. 3
- RSP S18 Overhead Signs, Walkway Safety Railing Details
- RSP S19 Overhead Signs-Truss, Sign Mounting Details, Laminated Panel-Type A
- RSP S20 Overhead Signs, Steel Frames, Removable Sign Panel Frames
- RSP S21 Overhead Signs, Removable Sign Panel Frames, Mounting Details
- RSP S22 Overhead Signs-Truss, Removable Sign Panel Frames, 2794 mm and 3048 mm Sign Panels

WALKWAY BRACKETS:

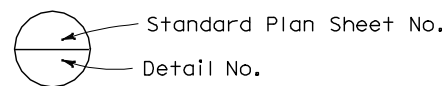
Space all walkway brackets maintaining uniform spacing where possible. Maximum spacing shall not exceed 1676 mm.

LIGHTING FIXTURE SUPPORTS:

Where distance from walkway bracket to end of sign panel exceeds 406 mm, extend lighting fixture supports to next walkway bracket. See Example No. 2.

WALKWAY AND SAFETY RAILING:

Walkway to be continuous for entire length of frame for single post signs. For two post signs, see Project Plans. Safety railing to protect entire walkway, but continuous for no more than 3353 mm in one unit.



NOTE

Signs are shown and dimensioned looking in the direction of traffic. Double faced signs are shown and dimensioned looking ahead along stationing.

GENERAL NOTES

DESIGN:

AASHTO Specifications for Structural Supports for Highway Signs, Luminaires and Traffic Signals, dated 2001.

CONSTRUCTION:

Standard Specifications and the Special Provisions.

LOADING:

WIND LOADING:

Normal to face of sign: 1930 Pa on 100% Truss surface area (i.e. 100% panel coverage).

Transverse to face of sign: 20% of normal force.

WALKWAY LOADING:

Dead load +229 kg concentrated live load.

UNIT STRESSES:

STRUCTURAL STEEL: $f_y = 250 \text{ MPa}$

REINFORCED CONCRETE: $f_y = 415 \text{ MPa}$

$f'_c = 25 \text{ MPa}$

FOOTING SOIL PRESSURE: 120 kPa (spread footing)

MINIMUM CLEARANCE

Vertical roadway clearance 5500 mm.

WELDING:

All welding continuous unless otherwise noted on the plans. All welding to be done in accordance with the Standard Specifications.



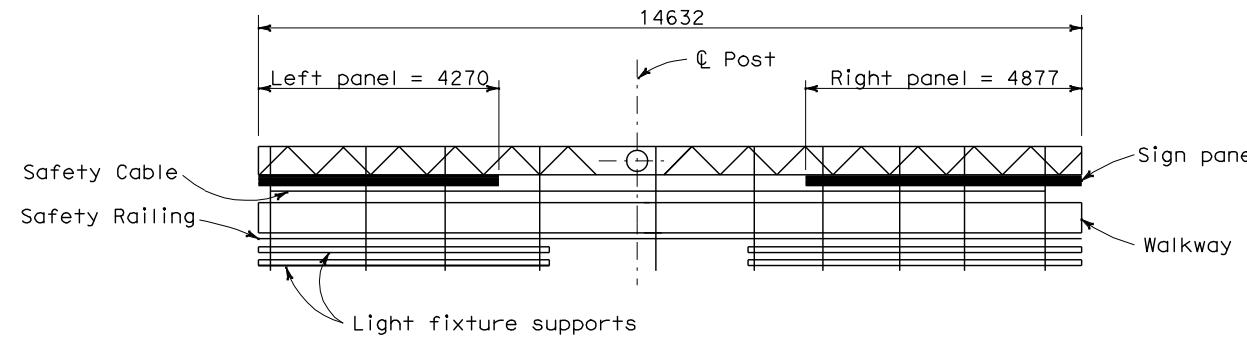
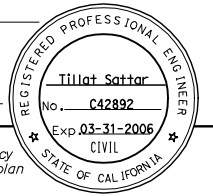
DIST	COUNTY	ROUTE	KILOMETER POST TOTAL PROJECT	SHEET NO.	TOTAL SHEETS

REGISTERED CIVIL ENGINEER

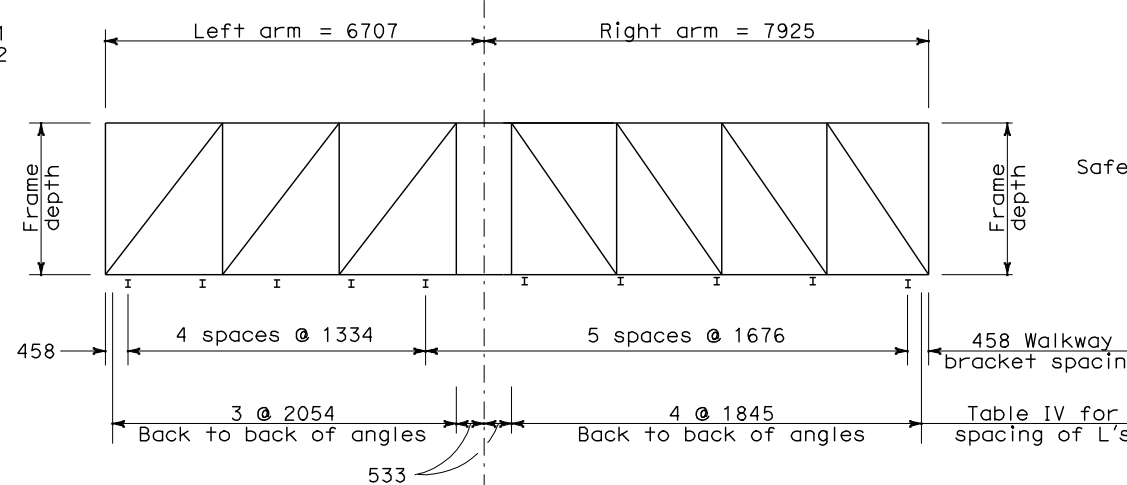
January 24, 2005
PLANS APPROVAL DATE

The State of California or its officers or agents shall not be responsible for the accuracy or completeness of electronic copies of this plan sheet.

To get to the Caltrans web site, go to: <http://www.dot.ca.gov>

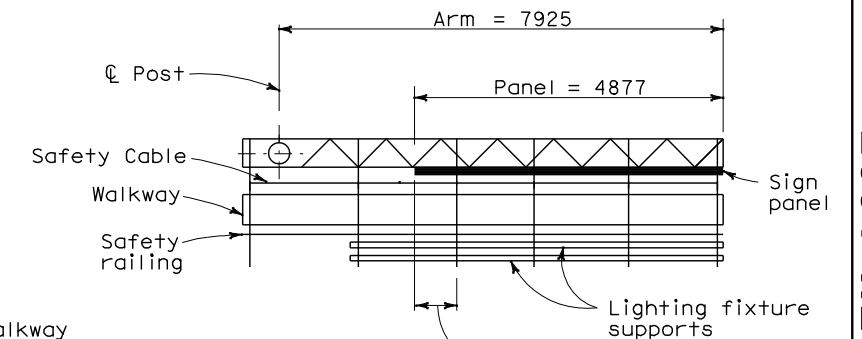


PLAN



UNBALANCED SINGLE POST TYPE

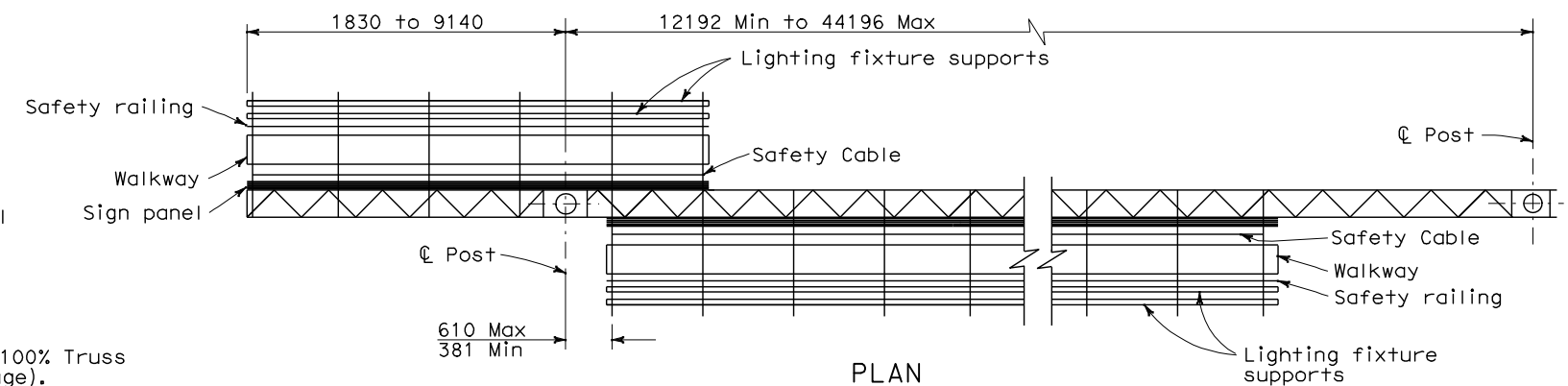
Example No. 1



PLAN

CANTILEVER SINGLE POST TYPE

Example No. 2



PLAN

TWO POST TYPE WITH CANTILEVER (PART DOUBLE-FACED)

Example No. 3

STATE OF CALIFORNIA
DEPARTMENT OF TRANSPORTATION

OVERHEAD SIGNS-TRUSS INSTRUCTIONS AND EXAMPLES

NO SCALE

ALL DIMENSIONS ARE IN MILLIMETERS UNLESS OTHERWISE SHOWN

RSP S1 DATED JANUARY 24, 2005 SUPERSEDES STANDARD PLAN S1 DATED JULY 1, 2004-PAGE 310 OF THE STANDARD PLANS BOOK DATED JULY 2004.

REVISED STANDARD PLAN RSP S1

2004 REVISED Std PLAN RSP S1