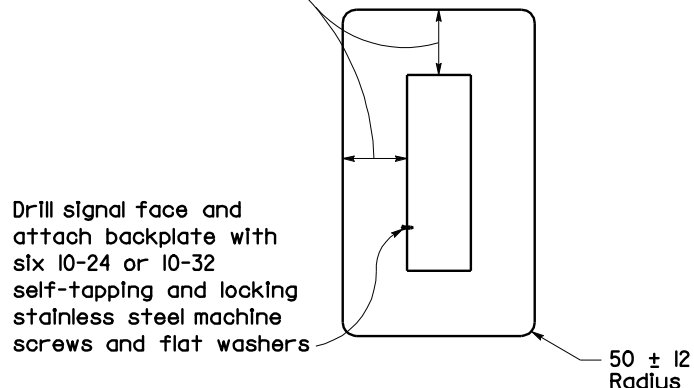




**TUNNEL**      **FULL CIRCLE**      **CAP OR CUT AWAY**      **LEFT ANGLE**  
**VISORS**  
 (Right angle is reversed of figure)

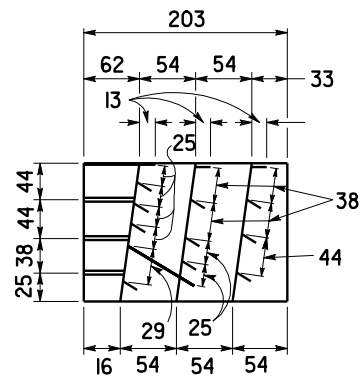
200 ± 13 for 200 mm sections  
 140 ± 13 for 300 mm sections



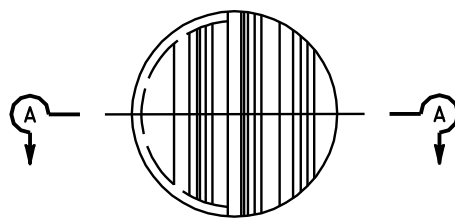
**200 mm AND 300 mm SECTIONS**

**BACKPLATE**

1.5 mm minimum thickness  
 3001-14 aluminum, or plastic  
 when specified



**SECTION A-A**



**FRONT VIEW**  
**DIRECTIONAL LOUVER**

Directional louvers shall be oriented as directed by the Engineer and secured in place with one plated brass machine screw and nut.



DIST	COUNTY	ROUTE	KILOMETER POST TOTAL PROJECT	SHEET NO.	TOTAL SHEETS

Jeffery G. McRae  
 REGISTERED ELECTRICAL ENGINEER

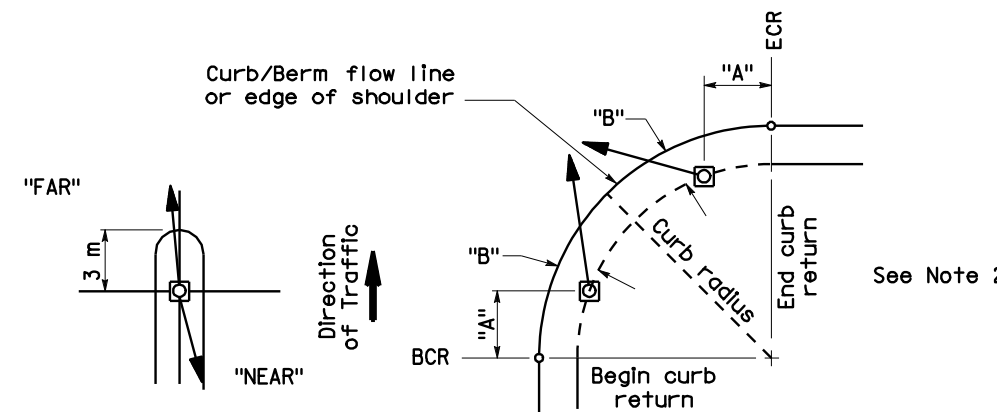
June 6, 2008  
 PLANS APPROVAL DATE

Jeffery G. McRae  
 REGISTERED PROFESSIONAL ENGINEER  
 No. E14512  
 Exp. 6-30-10  
 ELECTRICAL  
 STATE OF CALIFORNIA

The State of California or its officers or agents shall not be responsible for the accuracy or completeness of electronic copies of this plan sheet.

To get to the Caltrans web site, go to: <http://www.dot.ca.gov>

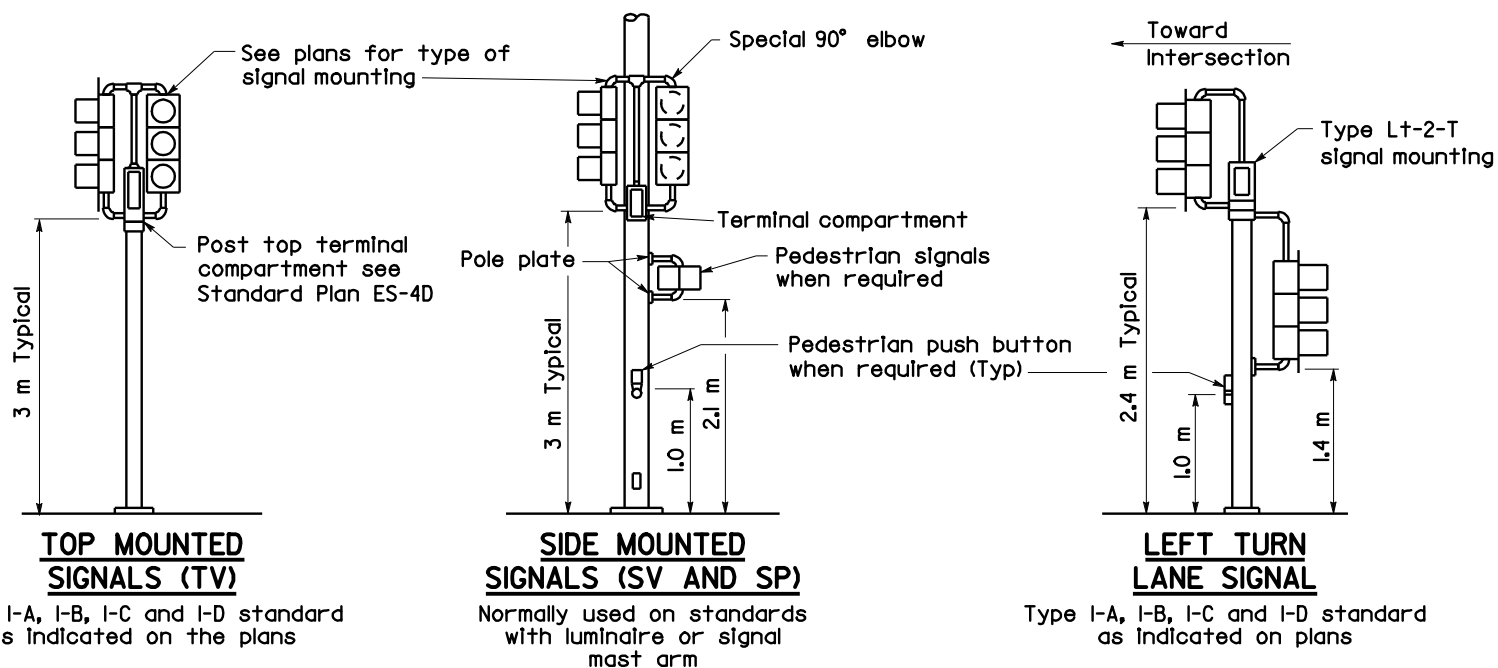
To accompany plans dated \_\_\_\_\_



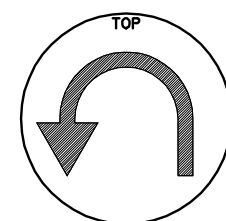
**NOTES:**

1. Typical signal pole placement unless dimensioned on plans.
2. For "A" and "B" dimensions, see Pole Schedule, or as directed by the Engineer.

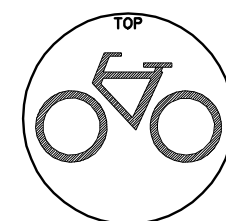
**SIGNAL STANDARD PLACEMENT DIMENSIONS AND EQUIPMENT LOCATIONS**



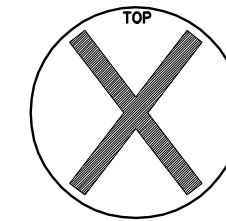
**TYPICAL SIGNAL INSTALLATIONS**



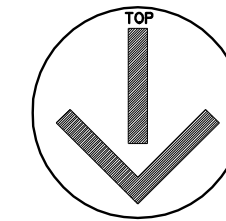
**U-TURN SIGNAL FACE**



**BICYCLE SIGNAL FACE**



**LANE CONTROL SIGNAL FACE**



**LANE CONTROL SIGNAL FACE**

STATE OF CALIFORNIA  
 DEPARTMENT OF TRANSPORTATION  
**ELECTRICAL SYSTEMS (SIGNAL HEADS AND MOUNTINGS)**

NO SCALE  
 ALL DIMENSIONS ARE IN MILLIMETERS UNLESS OTHERWISE SHOWN

RSP ES-4C DATED JUNE 6, 2008 SUPERSEDES STANDARD PLAN ES-4C DATED July 1, 2004 - PAGE 433 OF THE STANDARD PLANS BOOK DATED July 2004.

**REVISED STANDARD PLAN RSP ES-4C**

2004 REVISED STD PLAN RSP ES-4C