



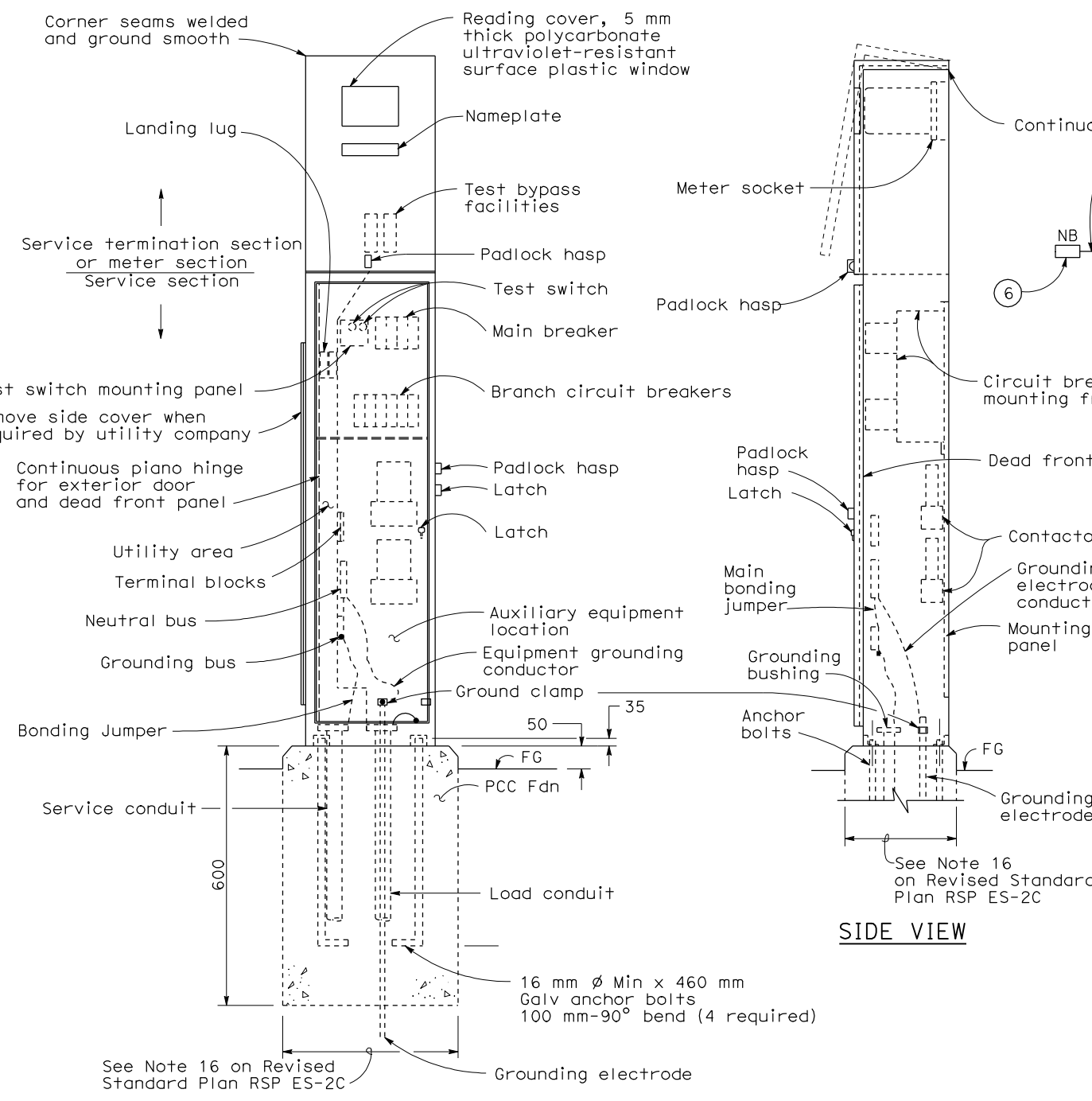
DIST	COUNTY	ROUTE	KILOMETER TOTAL PROJECT	POST TOTAL PROJECT	SHEET NO.	TOTAL SHEETS

REGISTERED ELECTRICAL ENGINEER
Jeffery G. McRae
 No. E14512
 Exp. 6-30-08
 STATE OF CALIFORNIA

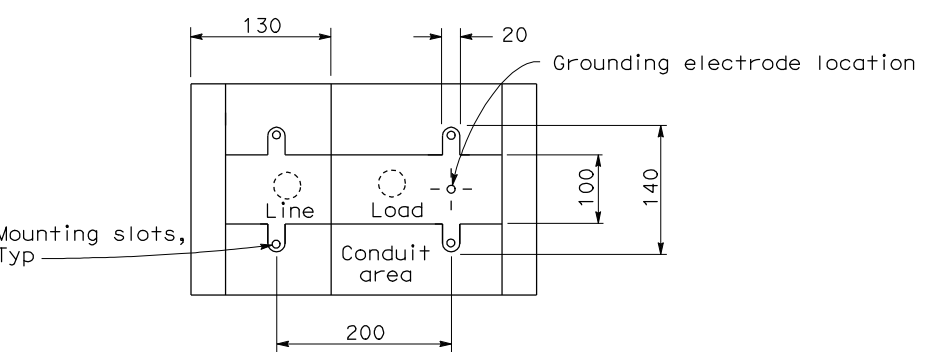
October 5, 2007
 PLANS APPROVAL DATE

The State of California or its officers or agents shall not be responsible for the accuracy or completeness of electronic copies of this plan sheet.

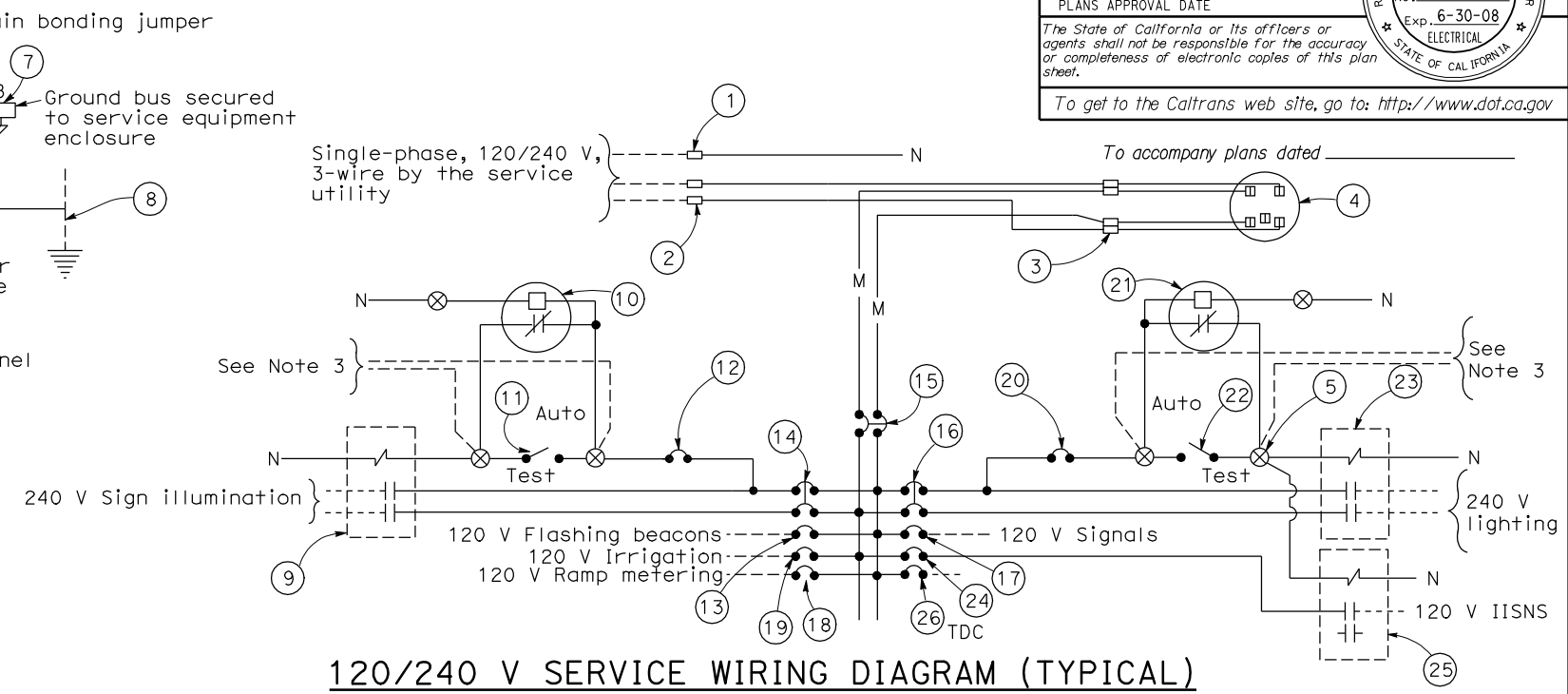
To get to the Caltrans web site, go to: <http://www.dot.ca.gov>



TYPE III-AF SERVICE EQUIPMENT ENCLOSURE (TYPICAL)



BASE FOR TYPE III-A SERVICE EQUIPMENT ENCLOSURE



120/240 V SERVICE WIRING DIAGRAM (TYPICAL)

TYPE III-A SERVICE (120/240 V) EQUIPMENT LEGEND					
ITEM No.	COMPONENT	NAME PLATE DESCRIPTION	ITEM No.	COMPONENT	NAME PLATE DESCRIPTION
①	Neutral lug		⑭	30 A, 240 V, 2P, CB	Sign Illumination
②	Landing lug (Note 6)		⑮	100 A, 240 V, 2P, CB	Main Breaker
③	Test bypass facility		⑯	30 A, 240 V, 2P, CB	Lighting
④	Meter socket and support		⑰	50 A, 120 V, 1P, CB	Signals
⑤	Terminal blocks		⑱	30 A, 120 V, 1P, CB	Ramp Metering
⑥	Neutral bus		⑲	20 A, 120 V, 1P, CB	Irrigation
⑦	Ground bus		⑳	15 A, 120 V, 1P, CB	Lighting Control
⑧	Grounding electrode		㉑	Photoelectric unit (Note 7)	
⑨	30 A, 2PNO Contactor	Sign Illumination	㉒	15 A, 1P, Test switch	Lighting Test Switch
⑩	Photoelectric unit (Note 7)		㉓	60 A, 2PNO Contactor	Lighting
⑪	15 A, 1P, Test switch	Sign Illumination Test Switch	㉔	15 A, 120 V, 1P, CB	IISNS
⑫	15 A, 120 V, 1P, CB	Sign Illumination Control	㉕	30 A, 2PNO Contactor	IISNS
⑬	15 A, 120 V, 1P, CB	Flashing Beacon	㉖	20 A, 120 V, 1P, CB	Telephone Demarcation Cabinet

- NOTES: (FOR SERVICE EQUIPMENT ENCLOSURE)**
- Voltage ratings of service equipment shall conform to the service voltages indicated on the plans.
 - Unless otherwise indicated on the plans, service equipment items shall be provided for each service equipment enclosure as shown.
 - Connect to remote test switch mounted on lighting standards, sign post or structure when required.
 - Items No. ① and ⑥ shall be isolated from the service equipment enclosure.
 - Meter sockets shall be 5 clip type.
 - The landing lug shall be suitable for multiple conductors.
 - Type V photoelectric control shall be used unless otherwise indicated on the plans.

STATE OF CALIFORNIA
DEPARTMENT OF TRANSPORTATION

**ELECTRICAL SYSTEMS
(SERVICE EQUIPMENT AND
TYPICAL WIRING DIAGRAM,
TYPE III - A SERIES)**

NO SCALE
ALL DIMENSIONS ARE IN
MILLIMETERS UNLESS OTHERWISE SHOWN

2004 REVISED STD PLAN RSP ES-2D

419