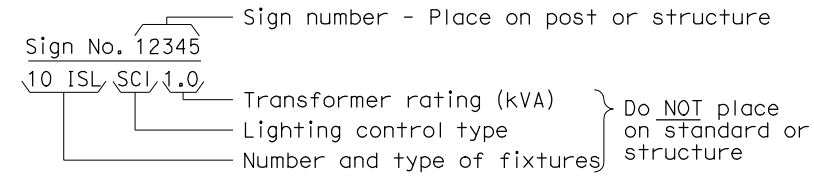
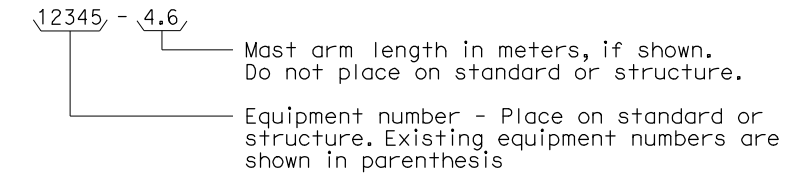


EQUIPMENT IDENTIFICATION

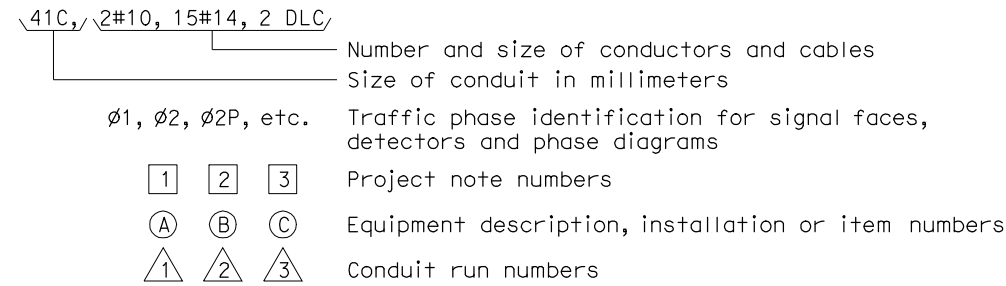
ILLUMINATED SIGN IDENTIFICATION NUMBER:



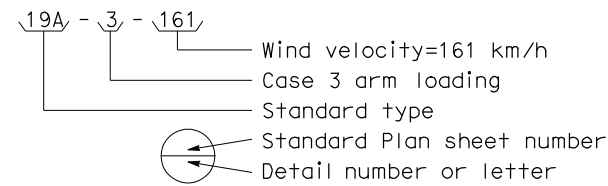
ELECTROLIER OR EQUIPMENT IDENTIFICATION NUMBER:



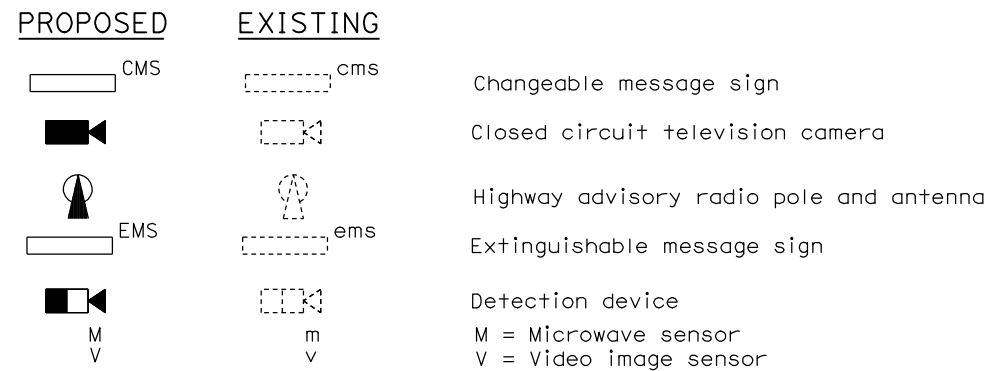
CONDUIT AND CONDUCTOR IDENTIFICATION:



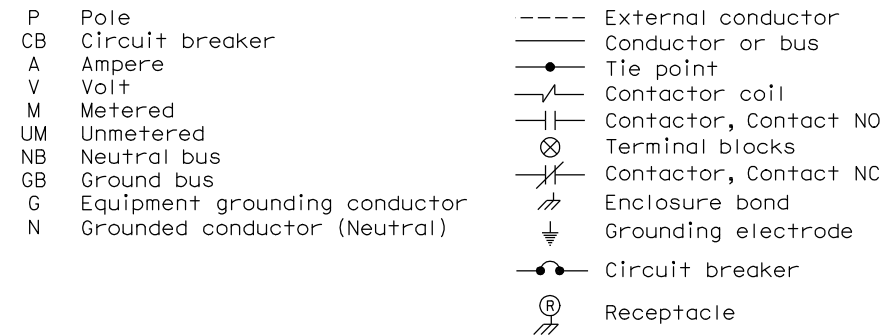
SIGNAL AND LIGHTING STANDARD (TYPICAL DESIGNATION):



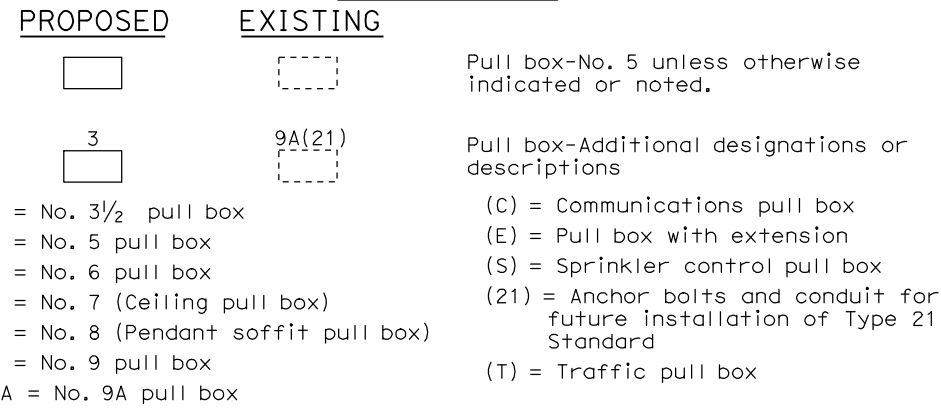
MISCELLANEOUS EQUIPMENT



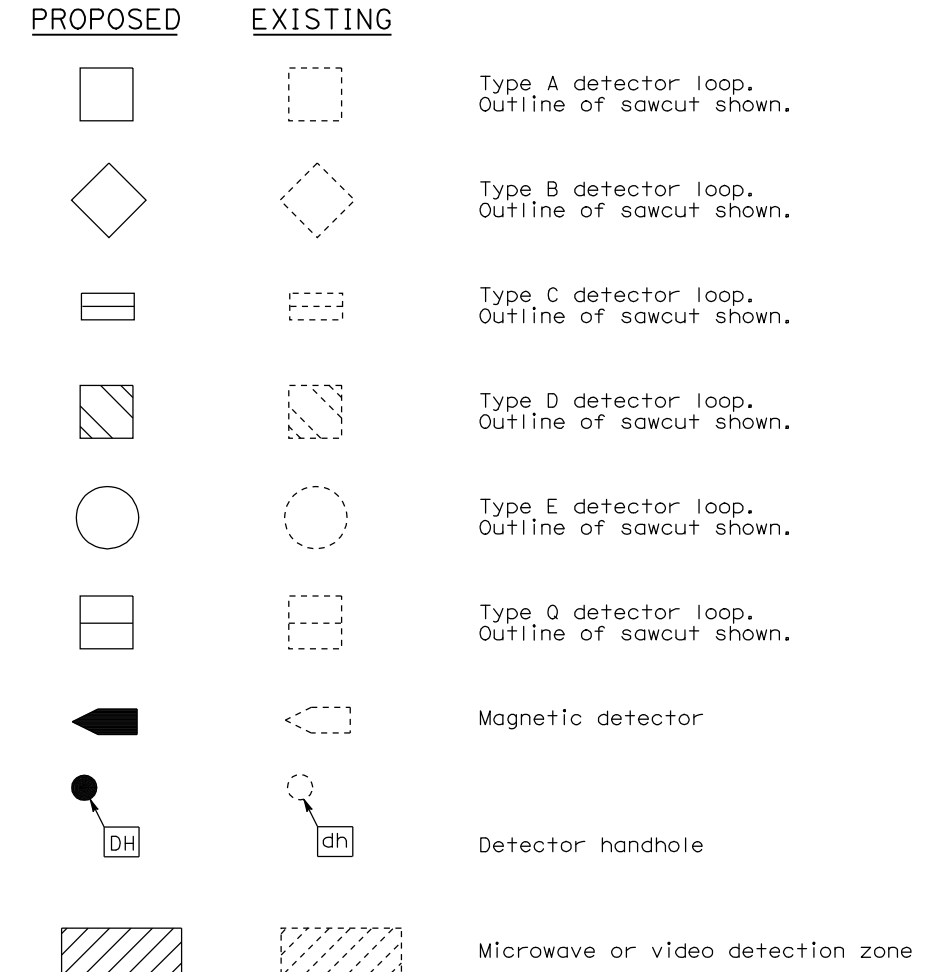
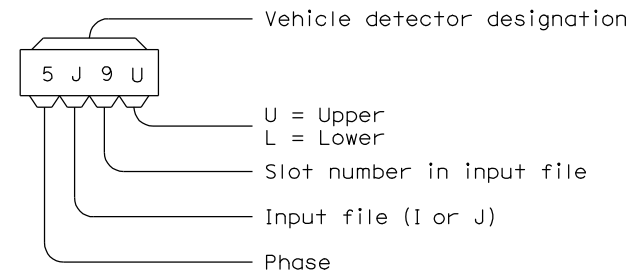
WIRING DIAGRAM LEGEND



PULL BOXES



VEHICLE DETECTORS



STATE OF CALIFORNIA
DEPARTMENT OF TRANSPORTATION

ELECTRICAL SYSTEMS (SYMBOLS AND ABBREVIATIONS)

NO SCALE
ALL DIMENSIONS ARE IN
MILLIMETERS UNLESS OTHERWISE SHOWN

RSP ES-1C DATED OCTOBER 5, 2007 SUPERSEDES STANDARD PLAN ES-1C
DATED JULY 1, 2004-PAGE 415 OF THE STANDARD PLANS BOOK DATED JULY 2004.

REVISED STANDARD PLAN RSP ES-1C

| DIST | COUNTY | ROUTE | KILOMETER TOTAL PROJECT | POST PROJECT | SHEET NO. | TOTAL SHEETS |
|------|--------|-------|-------------------------|--------------|-----------|--------------|
| | | | | | | |

Jeffery G. McRae
REGISTERED ELECTRICAL ENGINEER

October 5, 2007
PLANS APPROVAL DATE

Jeffery G. McRae
No. E14512
Exp. 6-30-08
ELECTRICAL
STATE OF CALIFORNIA

The State of California or its officers or agents shall not be responsible for the accuracy or completeness of electronic copies of this plan sheet.

To get to the Caltrans web site, go to: <http://www.dot.ca.gov>

To accompany plans dated _____