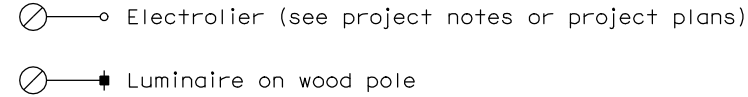
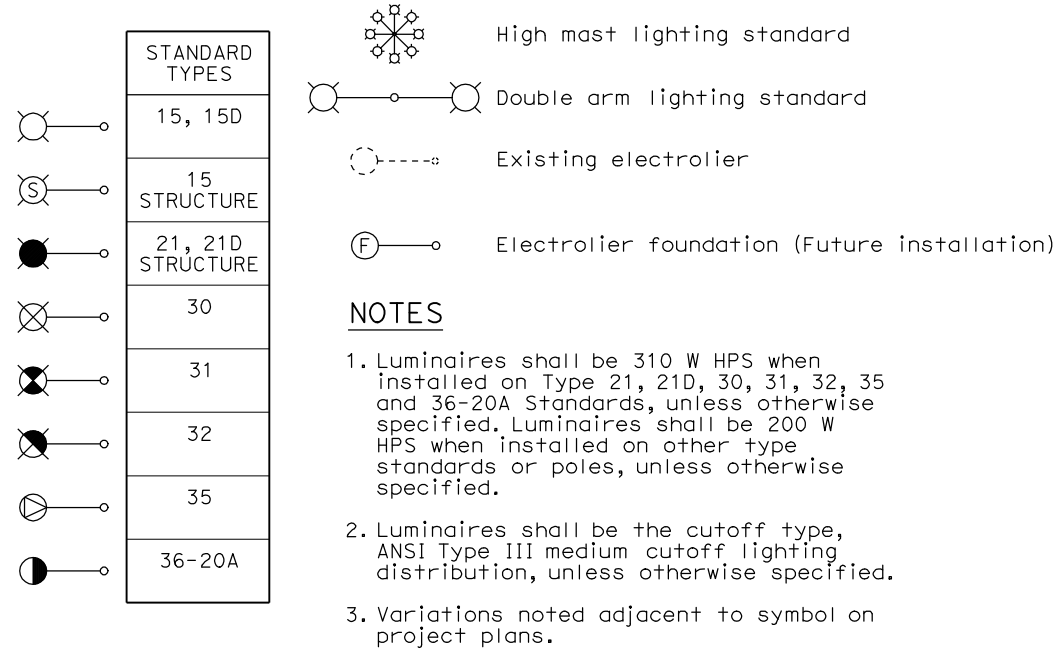


ELECTROLIERS



STANDARD NOTES

- AB** Abandon. If applied to conduit, remove conductors.
- BC** Install pull box in existing conduit run.
- BP** Pedestrian barricade, type as indicated on plan.
- CB** Install conduit into existing pull box.
- CC** Connect new and existing conduit. Remove existing conductors and install conductors as indicated.
- CF** Conduit to remain for future use. Remove conductors. Install pull wire or rope.
- DH** Detector handhole.
- FA** Foundation to be abandoned.
- IS** Install sign on signal mast arm.
- NS** No slip base on standard.
- PEC** Photoelectric control.
- PEU** Photoelectric unit.
- RC** Equipment or material to be removed and become the property of the Contractor.
- RE** Remove electrolier, fuses and ballast. Tape ends of conductors.
- RL** Relocate equipment.
- RR** Remove and reuse equipment.
- RS** Remove and salvage equipment.
- SC** Splice new to existing conductors.
- SD** Service disconnect.
- SF** Standard to remain for future use. Remove luminaire, pole conductors, fuses and ballast. Tape disconnects.
- TSP** Telephone service point.

ABBREVIATIONS AND EQUIPMENT DESIGNATIONS

PROPOSED EXISTING

BBS	bbs	Battery backup system
BC	bc	Bolt circle
C	C	Conduit
CCTV	cctv	Closed circuit television
CKT	ckt	Circuit
CMS	cms	Changeable message sign
DLC	dlc	Loop detector lead-in cable
EMS	ems	Extinguishable message sign
EVC	evc	Emergency vehicle cable
EVD	evd	Emergency vehicle detector
FB	fb	Flashing beacon
FBCA	fbca	Flashing beacon control assembly
FBS	fbs	Flashing beacon with slip base
FO	fo	Fiber optic
G	G	Ground (Equipment Grounding Conductor)
GFCI	GFCI	Ground fault circuit interrupt
HAR	har	Highway advisory radio
HEX	hex	Hexagonal
HPS	hps	High pressure sodium
IISNS	iisns	Internally illuminated street name sign
ISL	isl	Induction sign lighting
LED	led	Light emitting diode
LMA	lma	Luminaire mast arm
LPS	lps	Low pressure sodium
LTG	ltg	Lighting
LUM	lum	Luminaire
MAT	mat	Mast arm mounted vehicle signal faces, top attachment
MAS	mas	Mast arm mounted vehicle signal faces, side attachment
MAS-4A	mas-4A	Mast arm mounted vehicle signal faces, side attachment - 4 signal section
MAS-4B	mas-4B	
MAS-4C	mas-4C	
MAS-5A	mas-5A	Mast arm mounted vehicle signal faces, side attachment - 5 signal section
MAS-5B	mas-5B	
MC	mc	Mercury contactor
M/M	m/m	Multiple to multiple transformer
MT	mt	Conduit with pull wire or rope only
MTG	mtg	Mounting
N	N	Mercury vapor lighting fixture
NC	NC	Neutral (Grounded Conductor)
NO	NO	Normally closed
PB	pb	Normally open
PEC	pec	Pull box
PED	ped	Photoelectric control (Type I, II, III, IV or V as shown)
PEU	peu	Pedestrian
PPB	ppb	Photoelectric unit
RL	RL	Pedestrian push button
RM	rm	Relocated equipment
SB	sb	Ramp metering
SIC	sic	Slip base
SIG	sig	Signal interconnect cable
SMA	sma	Signal
SNS	sns	Signal mast arm
SP	sp	Street name sign
TDC	tdc	Service point
TMS	tms	Telephone demarcation cabinet
TOS	tos	Traffic monitoring station
VEH	veh	Traffic Operations System
XFMR	xfmr	Vehicle
COMM	comm	Transformer
RWIS	rwis	Communication
		Roadway weather information system



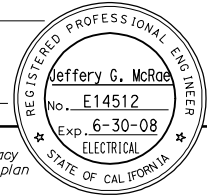
DIST	COUNTY	ROUTE	KILOMETER TOTAL PROJECT	POST SHEET NO.	TOTAL SHEETS

REGISTERED ELECTRICAL ENGINEER

October 5, 2007
PLANS APPROVAL DATE

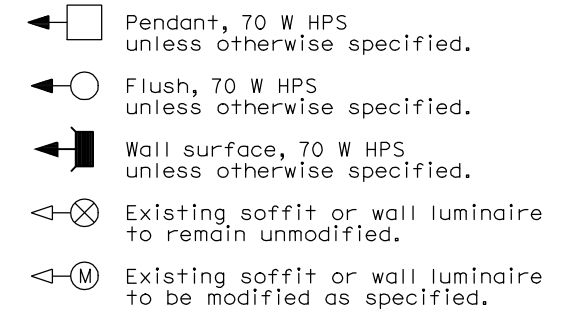
The State of California or its officers or agents shall not be responsible for the accuracy or completeness of electronic copies of this plan sheet.

To get to the Caltrans web site, go to: <http://www.dot.ca.gov>



To accompany plans dated _____

SOFFIT AND WALL MOUNTED LUMINAIRES



NOTE

Arrow indicates "street side" of luminaire.

ELECTRICAL SYSTEMS (SYMBOLS AND ABBREVIATIONS)

NO SCALE

ALL DIMENSIONS ARE IN MILLIMETERS UNLESS OTHERWISE SHOWN

RSP ES-1A DATED OCTOBER 5, 2007 SUPERSEDES STANDARD PLAN ES-1A DATED JULY 1, 2004-PAGE 413 OF THE STANDARD PLANS BOOK DATED JULY 2004.

REVISED STANDARD PLAN RSP ES-1A

2004 REVISED STD PLAN RSP ES-1A