



DIST	COUNTY	ROUTE	POST MILES TOTAL PROJECT	SHEET NO.	TOTAL SHEETS

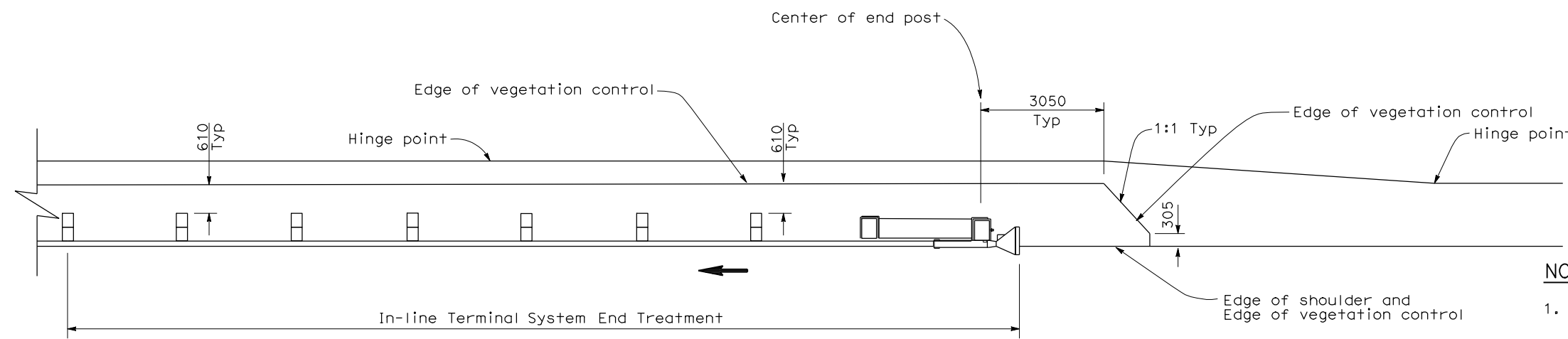
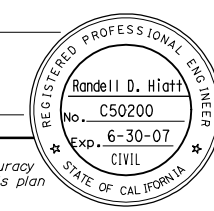
**Randell D. Hiatt**  
REGISTERED CIVIL ENGINEER

October 20, 2006  
PLANS APPROVAL DATE

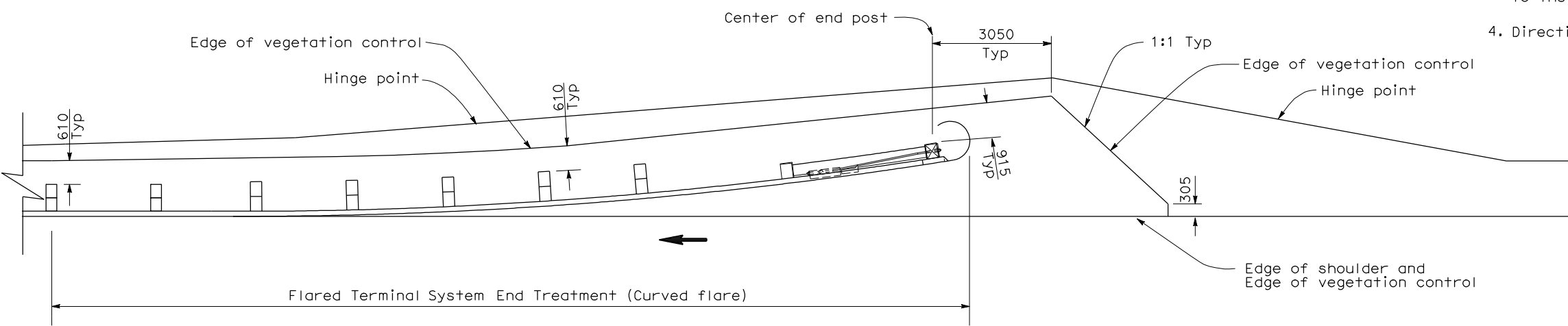
*The State of California or its officers or agents shall not be responsible for the accuracy or completeness of electronic copies of this plan sheet.*

To get to the Caltrans web site, go to: <http://www.dot.ca.gov>

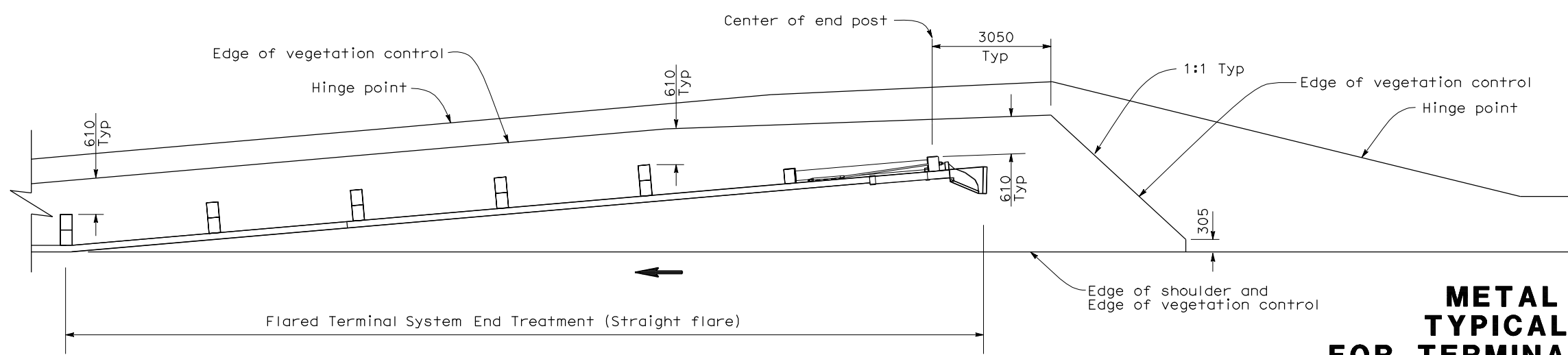
To accompany plans dated \_\_\_\_\_



PLAN



PLAN



PLAN

**NOTES:**

1. See New Standard Plan NSP A77C5 for additional vegetation control details.
2. Where the distance between back of post and hinge point is less than 610 mm, vegetation control to be constructed flush with the back edge of the post.
3. Where dike is constructed under railing, construct vegetation control to back edge of dike. Where paved shoulder is constructed within 610 mm in front of the post, construct vegetation control to the edge of paved shoulder.
4. Direction of adjacent traffic indicated by ←.

STATE OF CALIFORNIA  
DEPARTMENT OF TRANSPORTATION

**METAL BEAM GUARD RAILING  
TYPICAL VEGETATION CONTROL  
FOR TERMINAL SYSTEM END TREATMENTS**

NO SCALE  
ALL DIMENSIONS ARE IN  
MILLIMETERS UNLESS OTHERWISE SHOWN  
NSP A77C6 DATED OCTOBER 20, 2006 SUPPLEMENTS THE STANDARD  
PLANS BOOK DATED JULY 2004.

**NEW STANDARD PLAN NSP A77C6**

2004 NEW STANDARD PLAN NSP A77C6

47B