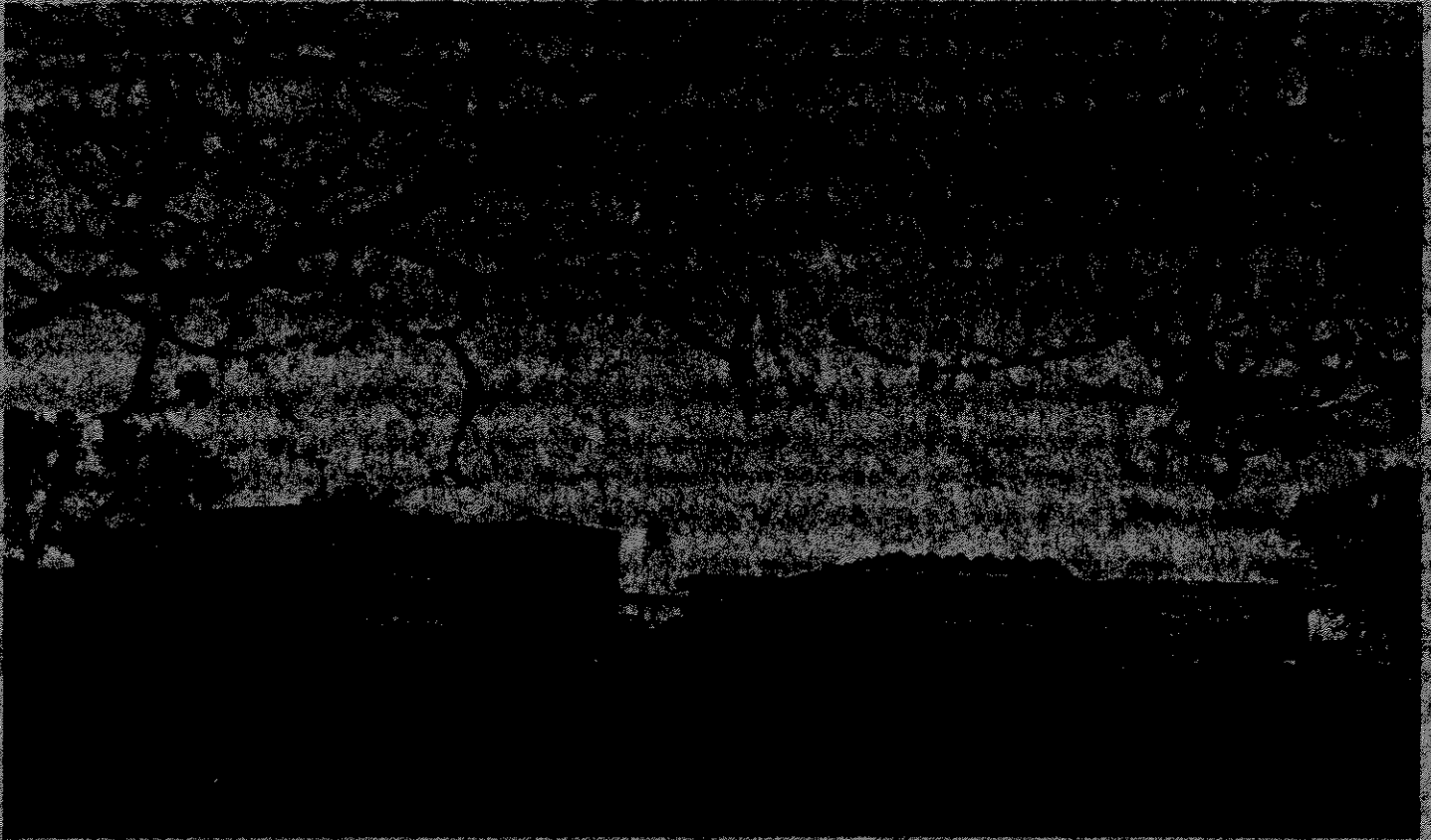


El Dorado County

*Department of Agriculture*



**1976**

*Agricultural*  
**CROP REPORT**

EDIO P. DELFINO  
AGRICULTURAL COMMISSIONER  
SEALER OF WEIGHTS AND MEASURES

EL DORADO COUNTY

## Department of Agriculture

PLACERVILLE, CALIFORNIA 95667

OFFICE  
311 FAIR LANE  
TELEPHONE 626-2286

April 5, 1977

Mr. Richard E. Rominger, Director  
California Department of Food and Agriculture

and

The El Dorado County Board of Supervisors

William V. D. Johnson, Chairman  
W. P. "Dub" Walker  
Thomas L. Stewart  
Lloyd Kutter  
Arliene Todd

Dear Director and Supervisors:

In accordance with provisions of Section 2279 of the California Agricultural Code, I hereby submit the 1976 El Dorado County Crop Report.

The gross agricultural value has dropped approximately ~~\$500,000~~<sup>\$1,500,000</sup>; however, the pear and cattle industries have suffered severe losses due to poor prices and high costs -- high feed costs for livestock and poor prices and demands on Bartlett pears.

The County's ranch marketing program is continuing to spread with more growers becoming involved with the program. It is becoming more and more obvious that this method of selling agricultural crops out of necessity must be expanded and improved.

The integrated pest control program has proven beneficial to the growers by reducing control costs without sacrificing the quality of products produced. This program has proven that if managed correctly, it controls crop-damaging pests with less cost to the grower and less effect on the environment.

The continued interest of the community regarding the welfare of the agricultural and timber industries has had a positive effect on the attitude of the agriculturalists. The interest and support exhibited by the Board of Supervisors has been very beneficial to this vital industry.

The monetary values recorded in this report are F.O.B. the plant and do not reflect net returns or profits realized by the grower.

*This report was compiled by Merco Petach, Agricultural Biologist III, with the El Dorado County Department of Agriculture. Mr. Petach spent many hours collecting and reviewing data so the report would be accurate and meaningful. I wish to express my appreciation to Mr. Petach and the many individuals and organizations that contributed information to make this report possible.*

*Sincerely,*

*Edio P. Delfino*  
Edio P. Delfino  
Agricultural Commissioner

EPD:mlb

FRUIT AND NUT CROPS: ACREAGE, PRODUCTION AND VALUE - 1975 AND 1976

	YEAR	ACREAGE		PRODUCTION		VALUE	
		Bearing	Non-Bearing	Per Acre	Total Units	Per Unit	Total
<u>PEARS</u>							
BARTLETT							
Fresh	1976				1,110 tons	155.26	172,300
	1975				3,337 tons	184.00	614,000
Cannery No. 1	1976				5,303 tons	105.00	556,800
	1975				9,189 tons	125.00	1,148,600
Cannery No. 2	1976				883 tons	67.36	59,500
	1975				989 tons	75.00	74,200
Hail Grade	1976				304 tons	85.00	25,800
	1974				2,652 tons	132.00	350,100
Dry Yard	1976				926 tons	10.00	9,300
TOTAL BARTLETTS	1976	2,224	80	3.83	8,526 tons	84.52	823,700
	1975	2,202	94	6.14	13,515 tons	135.92	1,837,000
BOSC	1976	108	15	4.49	485 tons	296.00	143,560
	1975	107	5	9.90	1,059 tons	225.00	238,300
OTHERS	1976	9		4.00	36 tons	160.00	5,800
	1975	14		5.70	80 tons	200.00	16,000
TOTAL PEARS	1976	2,341	95	3.86	9,047 tons	107.56	973,100
	1975	2,323	99	6.31	14,654 tons	142.71	2,091,300
<u>APPLES</u>							
Fresh Market	1976				4,340 tons	186.57	809,700
	1975				4,379 tons	202.00	884,560
C Grade Bins	1976				000 tons	.00	.000
	1975				247 tons	120.00	29,640
Cannery	1976				1,077 tons	103.00	110,930
	1975				1,652 tons	65.00	107,380
Cider	1976				2,620 tons	78.76	206,400
	1975				1,982 tons	45.00	89,200
TOTAL APPLES	1976	538	26	14.94	8,037 tons	140.23	1,127,000
	1975	533	31	15.50	8,260 tons	134.45	1,110,800

FRUIT AND NUT CROPS: ACREAGE, PRODUCTION AND VALUE - 1975 AND 1976

	YEAR	ACREAGE		PRODUCTION		VALUE	
		Bearing	Non-Bearing	Per Acre	Total Units	Per Unit	Total
CHERRIES	1976	35	17	2.1	74 tons	600.00	44,400
	1975	35	17	1.9	66 tons	660.00	43,500
PEACHES	1976	9		3.2	29 tons	500.00	14,500
	1975	9		.0	0 tons	.00	.000
PLUMS	1976	45	35	7.3	328 tons	378.00	124,000
	1975	42	30	4.8	201 tons	260.00	52,250
GRAPES	1976	114	46	1.60	182 tons	204.00	37,100
	1975	35	121	3.37	118 tons	194.90	23,000
WALNUTS - ENGLISH	1976	402	24	.24	96 tons	540.00	51,800
	1975	396	31	.47	186 tons	480.00	89,300
WALNUTS - BLACK	1976				410 sacks	1.75	700
	1975				1,100 sacks	1.75	1,900
TOTAL FRUIT AND NUT CROPS	1976	3,484	243		17,793 tons		2,372,600
	1975	3,373	147		23,485 tons		3,412,050

LIVESTOCK AND POULTRY - PRODUCTION AND VALUE - 1975 AND 1976

	YEAR	PRODUCTION			VALUE	
		No. Head	Total Live Weight	Unit	Per Unit	Total
CATTLE & CALVES	1976	10,083	75,328	cwt.	33.90	2,553,600
	1975	11,870	102,082	cwt.	29.90	3,052,250
SHEEP	1976	189	237	cwt.	13.00	3,100
	1975	270	364	cwt.	11.00	4,000
LAMBS	1976	1,914	1,990	cwt.	60.00	119,400
	1975	2,280	2,210	cwt.	45.00	99,500
HOGS & PIGS	1976	2,207	3,928	cwt.	39.20	154,000
	1975	1,139	1,822	cwt.	60.00	120,250
HORSES	1976	1,600		head	225.00	360,000
	1975	920		head	275.00	253,000
GOATS & GOATS MILK	1976	0	0	0	0	221,250
	1975	400		head	37.50	482,000
PULLETS, BROILERS & FRYERS	1976	86,100		head	2.64	227,300
	1975	176,545		head	2.73	482,000
OTHER CHICKENS	1976	0	0		0	0
	1975	50,900		head	.30	15,300
TURKEYS (INCLUDES TURKEY EGGS FOR HATCHING)	1976	52,300				407,000
	1975	43,500	756,000	lbs.	.38	287,300
RABBITS, DUCKS & GEESE	1976	2,600			3.32	8,630
	1975	5,300		head	3.19	16,900
TOTAL LIVESTOCK AND POULTRY	1976					4,054,300
	1975					4,345,500

LIVESTOCK AND POULTRY PRODUCTS - PRODUCTION AND VALUE - 1975 AND 1976

	YEAR	PRODUCTION		VALUE	
		Weight	Unit	Per Unit	Total
MILK - MARKET	1976*	9,500	cwt.	9.34	88,700
	1975**	9,500	cwt.	9.27	88,100
WOOL	1976	15,000	lbs	.615	9,200
	1975	15,500	lbs	.405	6,075
EGGS, CHICKEN - MARKET	1976				0
	1975	664,137	doz.	.58	385,200
TOTAL LIVESTOCK AND POULTRY PRODUCTS	1976				97,900
	1975**				479,400
TOTAL LIVESTOCK AND POULTRY AND LIVESTOCK AND POULTRY PRODUCTS	1976*				4,152,200
	1975 **				4,824,900

APIARY PRODUCTS - PRODUCTION AND VALUE - 1975 AND 1976

	YEAR	PRODUCTION		VALUE	
		Weight	Unit	Per Unit	Total
HONEY	1976	34,000	lbs	.55	18,700
	1975	26,100	lbs	.69	18,000
POLLINATION	1976	670	colonies	10.00	6,700
	1975	360	colonies	10.00	3,600
PACKAGE BEES	1976	200	packages	15.00	3,000
	1975				1,200
BEES WAX	1976	100	lbs	1.25	125
TOTAL APIARY	1976				28,500
	1975				22,800

\*Preliminary

\*\*Revised

MISCELLANEOUS - PRODUCTION, AREA, SALES AND VALUE - 1975 AND 1976

	YEAR	PRODUCTIONS AREA ACRES	QUANTITY SOLD BY PRODUCERS	UNIT	VALUE	
					Per Unit	Total
NURSERY STOCK Propagative Materials	1976	54	8,206,600	M	59.10	485,100
WOODY DECIDUOUS, & EVERGREEN ORNAMENTALS, Trees, Shrubs, etc.	1976	7	96,700	ea.	.91	88,000
TOTAL NURSERY	1976	61	8,303,300			573,100
	1975	36	8,166,500			355,300
CHRISTMAS TREES Wholesale Cut	1976*		22,600	ea.	6.40	144,600
	1975*		17,680	ea.	6.25	110,500
Choose & Cut	1976		22,085	ea.	8.39	185,300
	1975* & ***		33,028	ea.	5.32	175,700
HAY - TAME	1976	4,000	10,000	tons	74.00	740,000
	1975	4,000	12,800	tons	60.00	768,000
PASTURE & RANGE IRRIGATED	1976	5,800		acre	72.00	417,600
	1975	5,700		acre	68.00	390,300
PASTURE & RANGE DRY LAND	1976	250,000		acre	3.50	875,000
	1975	250,000		acre	3.50	875,000
BERRIES - TRUCK GARDENS, ETC.	1976	33		acre		34,700
	1975	24		acre		28,800
TOTAL MISCELLANEOUS	1976					2,970,300
	1975					2,703,600

- \* Does not include Christmas trees cut on government land.
- \*\* Revised
- \*\*\* Lower per unit value due to liquidation of one large grower.



TOTALS FOR ALL CATEGORIES

FRUITS & NUTS	1976	2,372,600
	1975	3,412,050
ANIMAL INDUSTRY	1976*	4,152,200
	1975**	4,824,900
MISCELLANEOUS	1976	2,970,300
	1975	2,703,600
APIARY PRODUCTS	1976	28,500
	1975	22,800
GRAND TOTAL	1976*	9,523,600
	1975**	10,963,350
	1975	10,961,950

\* Does not include Christmas trees cut on government land.  
 \*\* Revised