

CONTACT INFORMATION

El Dorado County Sheriff
300 Fair Lane
Placerville, CA 95667
Tel: 530 621-5655

1360 Johnson Blvd, #100
South Lake Tahoe CA 96150
Tel: 530 373-3000

E-mail:
<http://www.edcgov.us/Sheriff>

Placer County Sheriff
2501 N. Lake Blvd
Tahoe City, CA 96145
Office phone: 530 581-6301
After Hours: 530 581-6300

E-mail:
<http://www.placer.ca.gov/Departments/Sheriff>

Dept. of Parks & Recreation
OE-Hwy Motor Vehicle Div
1416 9th Street
Sacramento, CA 9584
Tel: 916 656-6995

E-mail:
<http://ohv.parks.ca.gov>

Rubicon Trail Foundation (RTF)
P.O. Box 2188
Placerville, CA 95667
Tel: 1-888 678-2426

E-mail:
<http://www.rubicontrail.org>

Friends of the Rubicon (FOTR)
P.O. box 2188
Placerville, CA 95667
Tel: 1-888 678-2426

E-mail:
<http://www.rubicontrail.org/rft-totrain.htm>

CAMP FIRE PERMITS

Where can I obtain a permit?

Any Forest Service, California Department of Forestry and Fire Protection Office, or Bureau of Land Management Office in California.

Pacific Ranger Station
4260 Eight Mile Road
Camino, Ca 95706
Tel: 530644-2324

Georgetown Ranger Station
4600 Wentworth Springs Road
Georgetown, CA 95624

South Lake Tahoe Station
35 College Drive
South Lake Tahoe, CA 96150

North Shore Station
855 Alder Avenue
Incline Village, NV 89450

WHAT TO BRING ON THE TRAIL

- Tent
- Sleeping Bag
- Change of Clothes
- Jacket
- Sunscreen and insect repellent
- Flashlight with extra batteries
- Ham radio
- First aid kit
- Fire extinguisher
- Tarp

PRE-TRIP MAINTENANCE

- Check Engine and Transmission Oil
- Check Brake Fluid, pads and shoes
- Check radiator coolant
- Check that the battery is strapped down
- Check hoses for cracks and leaks
- Check fan belt
- Check power steering system
- Check seat belts
- Check tires for wear or damage
- Check lug bolts
- Check for loose nuts and bolts
- Grease all fitting
- Check winch and cable

THE 4 - S's

Sanitation

What is a White Flower?

- *Answer:* It's the toilet paper you leave behind. You should use a Wag Bag.

What is a Wag Bag?

- *Answer:* A safe, eco-friendly human waste disposal systems.

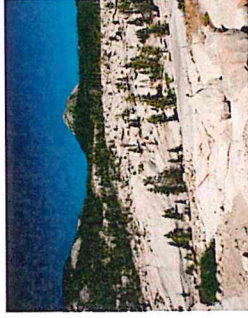
Why use a Wag Bag?

- *Answer:* The chemical renders fecal matter inert. The bag itself will decompose completely in a season.

How do I use a Wag Bag?

- *Answer:* Pee & poo in the bag. Add the chemical provided. Tie it shut.

THE RUBICON TRAIL



Information Provided by:

County of El Dorado
Parks Division
330 Fair Lane
Placerville, CA 95667
Tel: 530 622-5595

<http://www.edcgov.us/Rubicon>

Where do I dispose of the Wag Bag?

- *Answer:* Drop the bag into any trash bin, not into toilets or outhouses.

Spills

- Perform pre-trip maintenance
- Check your vehicle often for leaks
- Carry and use a spill cleanup kit
- Use a spotter
- Stop every leak
- Use hazardous waste sheds
- If it leaks, leave it at home

Sedimentation

- Stay on designated routes
- Look for trail markers
- Never drive through meadows
- Straddle ruts, gullies and washouts
- Cross streams at designated points
- Minimize wheel spin
- Never drive over vegetation
- Be patient at hold ups

Safety

- Buckle up - State laws apply
- Help a wheeler in need
- Carry or locate a HAM radio
- Don't shoot in camps or along trails
- Yield to bikers, hikers and equine
- Drink responsibly
- Use a spotter
- Fire restrictions are in effect

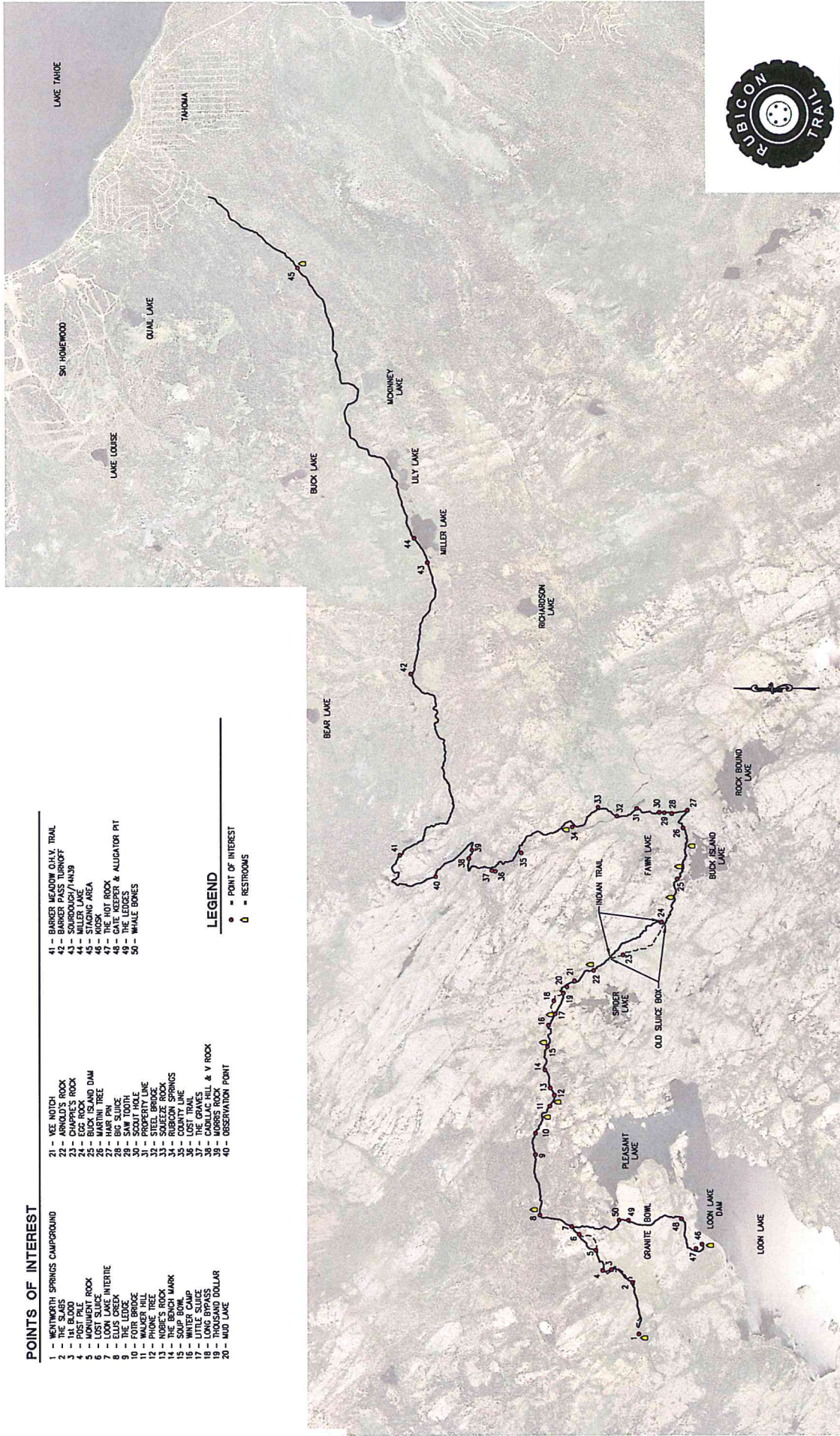
POINTS OF INTEREST

- 1 - NORTHERN SPRINGS CAMPGROUND
- 2 - THE SLABS
- 3 - THE BEGG
- 4 - MONUMENT ROCK
- 5 - LOST SLICE
- 6 - LOON LAKE INTERIE
- 7 - LOON LAKE DAM
- 8 - THE LEDGE
- 9 - FOUR BRIDGE
- 10 - WALKER HILL
- 11 - HURD'S ROCK
- 12 - THE BENCH MARK
- 13 - SOUP BOWL
- 14 - THE GRAY
- 15 - LITTLE SLICE
- 16 - LONG RYPASS
- 17 - THOUSAND DOLLAR
- 18 - MUD LAKE
- 19 - VEE NOTCH
- 20 - ARNOLD'S ROCK
- 21 - CHARPLE'S ROCK
- 22 - BLACK ISLAND DAM
- 23 - MARTIN TREE
- 24 - HARP PIN
- 25 - SAW TOOTH
- 26 - PROPERTY LINE
- 27 - STEEL BRIDGE
- 28 - SQUEEZE ROCK
- 29 - RUBICON SPRINGS
- 30 - COUNTY LINE
- 31 - THE GRAVES
- 32 - CADILLAC HILL & V ROCK
- 33 - MORRIS ROCK
- 40 - OBSERVATION POINT

- 41 - BARKER MEADOW OH.V. TRAIL
- 42 - BARKER PASS TURNOFF
- 43 - SIBBING/714239
- 44 - STAGING AREA
- 45 - KIOSK
- 46 - THE HOT ROCK
- 47 - THE HOT ROCK & ALLIGATOR PIT
- 48 - THE LEDGES
- 49 - WHALE BONES

LEGEND

- - POINT OF INTEREST
- - RESTROOMS



TREAD LIGHTLY



EL DORADO COUNTY