

## Avenza App with ESRI data

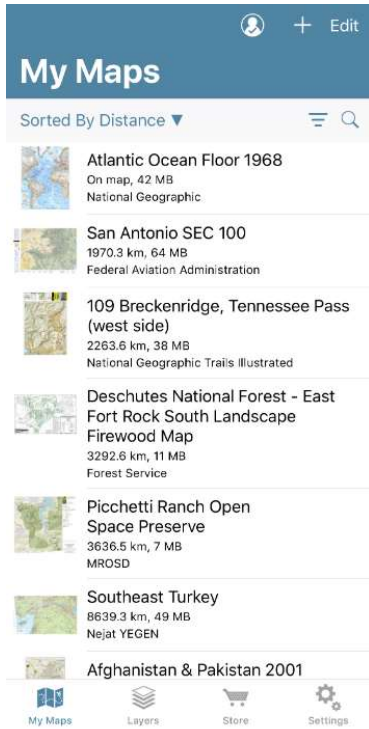
Avenza is a free application with some free maps to download on mobile devices. This application can be used offline and you can add data to it for visualization. This is a great workaround for those who want to view online ESRI web content but don't have an ArcGIS Online account.



1. Download the Avenza Maps app on your mobile device.
2. Create an account by registering your email in the application and verify your registration on your email account.
3. Download a map with the Rubicon Trail Exhibit QR Code
  - 3.1. Open the Avenza app and sign in

A screenshot of the Avenza Maps sign-in interface. At the top, it says "Sign in to your Avenza Maps account". Below this are two input fields: "Email" and "Password". At the bottom, there are three buttons: a large blue "Sign In" button with a white outline, a grey "Register" button, and a grey "Reset Password" button.

- 3.2. Go to the Maps tab at the bottom of the screen



3.3. Tap the plus sign, “+”, in the upper right corner to go to Import Maps



3.4. Tap the QR Code icon in the upper right corner



3.5. Use your camera to capture the code below to download the map of the entire Rubicon Trail. It should start downloading immediately without you having to actually take a picture of the QR Code.




4. Search for free maps to “purchase” in Avenza either in the app or online



4.1. Click on the Store icon and tap on the Search box to enter a location, keyword or activity, i.e. “Rubicon”

4.2. Tap on the Map icon and zoom to the area of interest




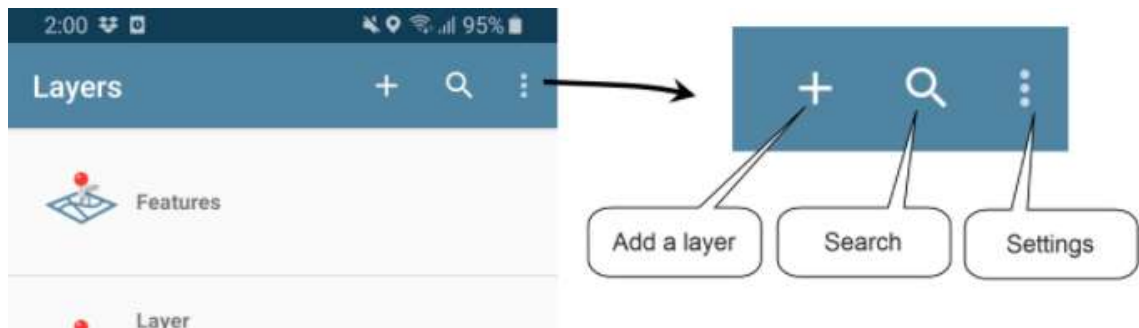
- 4.3. Use the Filter icon to search for the Free maps 
- 4.4. Click Apply
- 4.5. If it covers the area of interest, click the Free button below and confirm by tapping Download
- 4.6. Click Open Map to see it in your My Maps list

5. Open the downloaded Maps
  - 5.1. Tap on My Maps at the bottom of the screen to see all your downloaded maps.
  - 5.2. Tap the map you want to open.
  - 5.3. You should see a dot for where your location is

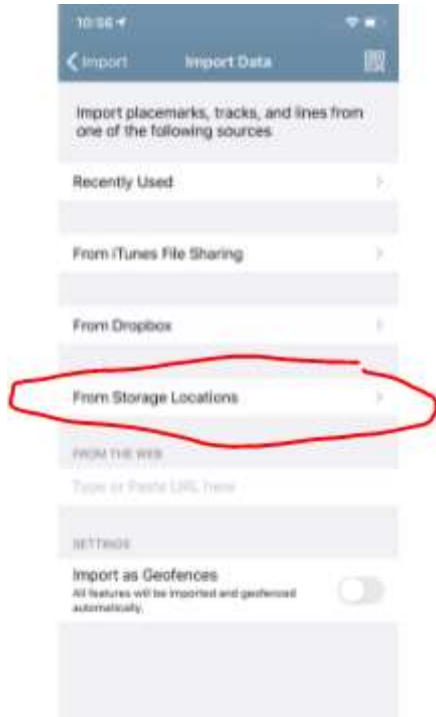


6. To add data to the map, first download the data in KMZ format onto your mobile device's storage. (This may be via your browser or your email, depending on where you obtain the data from.)
7. Add the layers from AGOL to your Avenza app

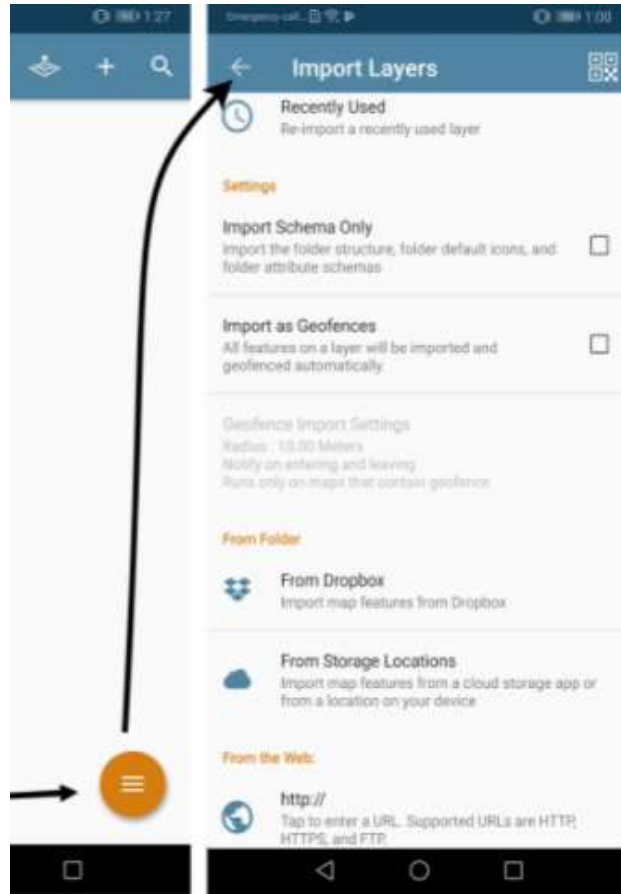
- 7.1. Tap on the Layers icon at the bottom of the page 
- 7.2. Tap the + button to Add a Layer at the top of the Layers page to bring in the KMZ file you just saved to your device



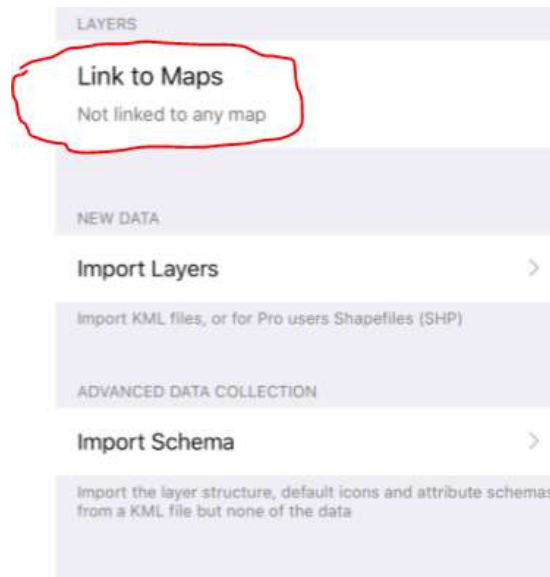
- 7.3. On an iPad in the Import Data page select From Storage Locations



- 7.3.1. If you're using a different device than an iPad, it might look like this (this is how it looks on my Android phone)



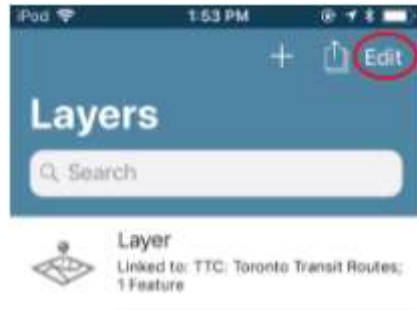
- 7.4. Depending on where you saved the KML, go to Browse and go to that location. If it's an iPad, go to On My iPad.
- 7.5. Link to the map, if you want to see the layers in them automatically.



- 7.5.1. If it doesn't show this upon import, you can always do it once the layer is added to Avenza by going to the Layers tab

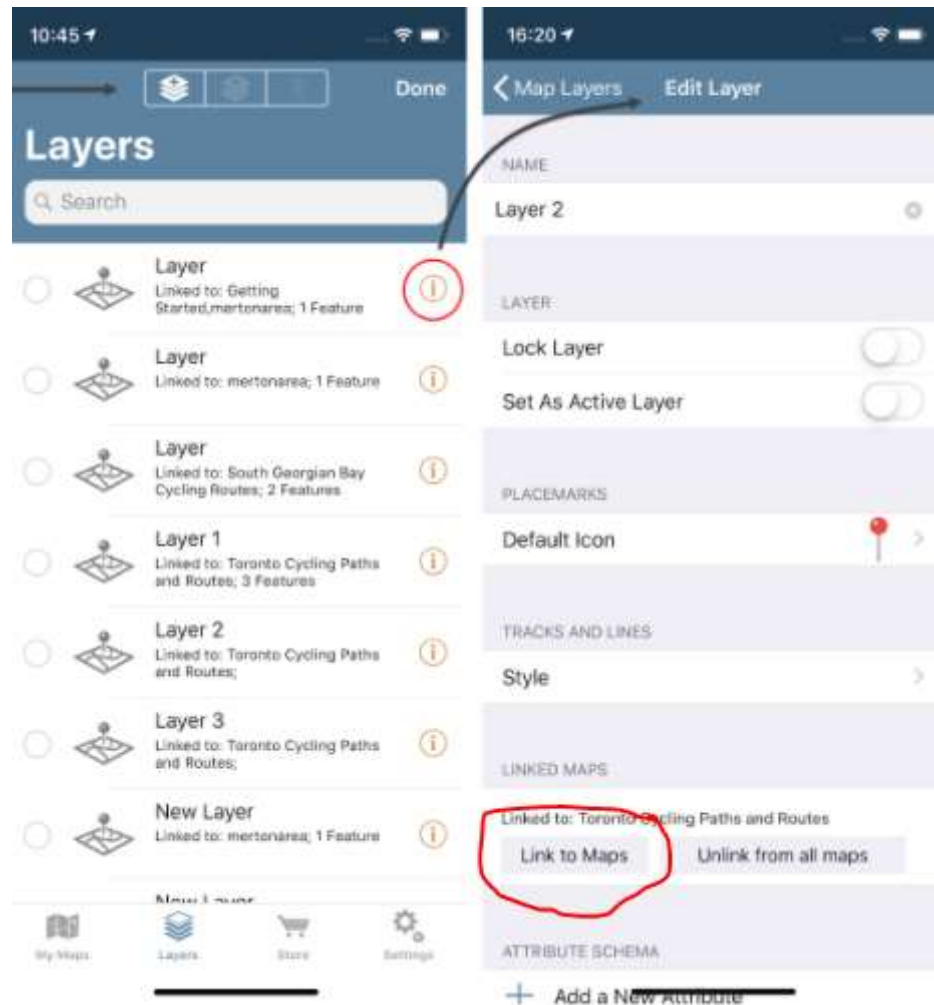


7.5.2. Tap on the Edit button in the top right corner



7.5.3.

7.5.4. Tap on the "i" icon and Link to Maps on the next screen



7.5.5. Select the maps you want to link to and Close the Edit page

8. Go back to the My Maps page and click on the map to open it.



9. Test that it works offline by disconnecting from internet and data services
10. Once in the area downloaded you will see a blue dot that represents your location. You can tap of the layers in your map to get a pop up