

2021

# REDISTRICTING

*El Dorado County  
Public Meeting #4  
November 3, 2021  
9:00 a.m.*

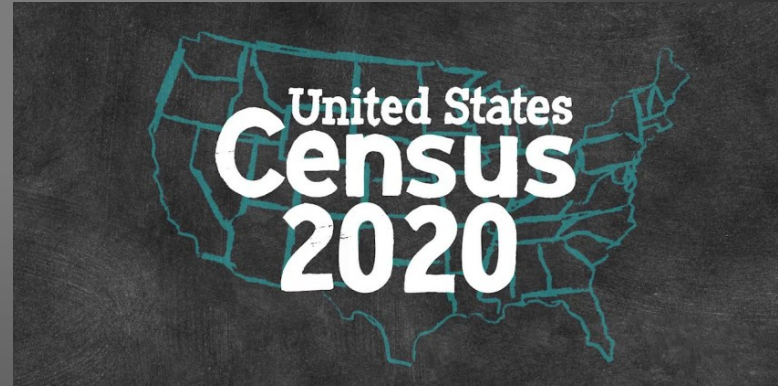
WELCOME!

OUR AGENDA  
FOR TODAY:

- *Introduction: What is redistricting?*
- *Rules for Map Alternatives*
- *Timeline for drawing a new map*
- *Three New Map Alternatives*
- *Questions/Discussion*

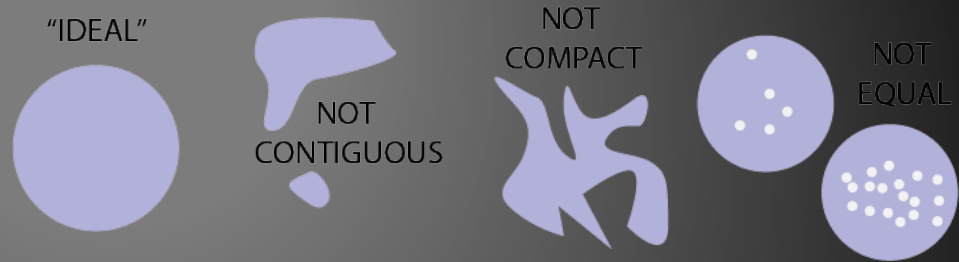
# WHAT IS REDISTRICTING?

- *The United States Constitution requires a count every ten (10) years of everyone residing in the United States.*
- *After the Census, district boundaries are redrawn to ensure that districts are substantially equal in population.*
- *In El Dorado County, this process is conducted for Board of Supervisors Districts – those that represent you locally.*



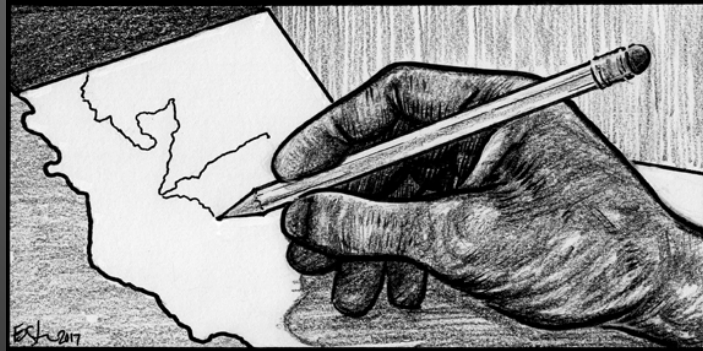
# MAPPING FACTORS IN ORDER OF PRIORITY:

1. Geographic contiguity
2. Geographic integrity of neighborhoods and local communities of interest.
3. Geographic integrity of cities or census-designated places.
4. Natural and artificial barriers, including streets and boundaries of the county when practicable.
5. Boundaries should be easily identifiable and understandable by residents, and bounded by natural and artificial barriers.
6. Geographical compactness.



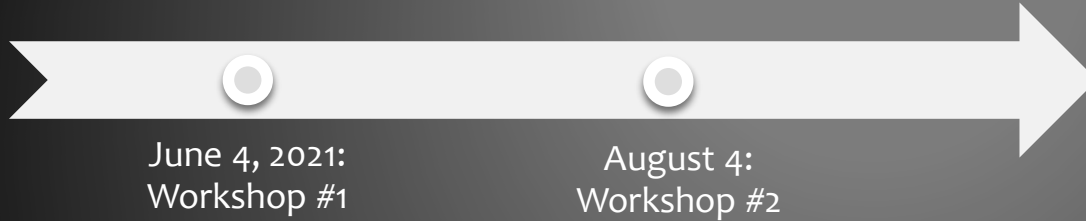
## OTHER RULES:

- District boundaries must comply with the United States Constitution, the California Constitution, and the federal Voting Rights Act of 1965.
- Lines CANNOT be drawn for the purpose of favoring or discriminating against a political party.
- Additional criteria can be considered, as long as they are not in conflict with or outweigh the criteria required by the State and Federal laws.

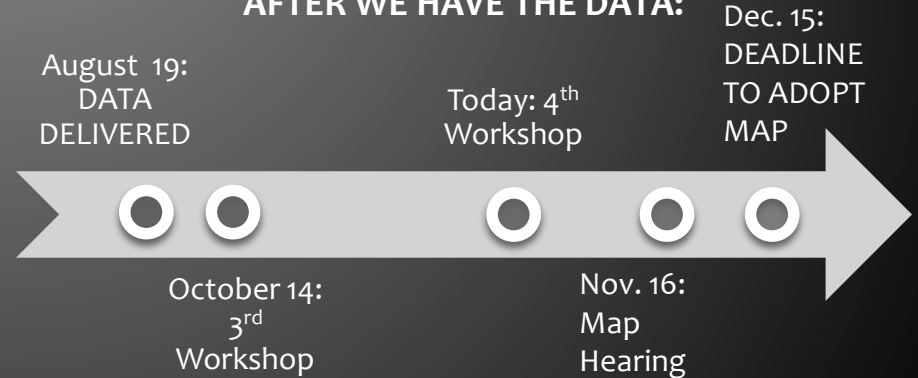


# PROCESS TIMELINE

## PRE-CENSUS DATA – COMMUNITY OF INTEREST INPUT:



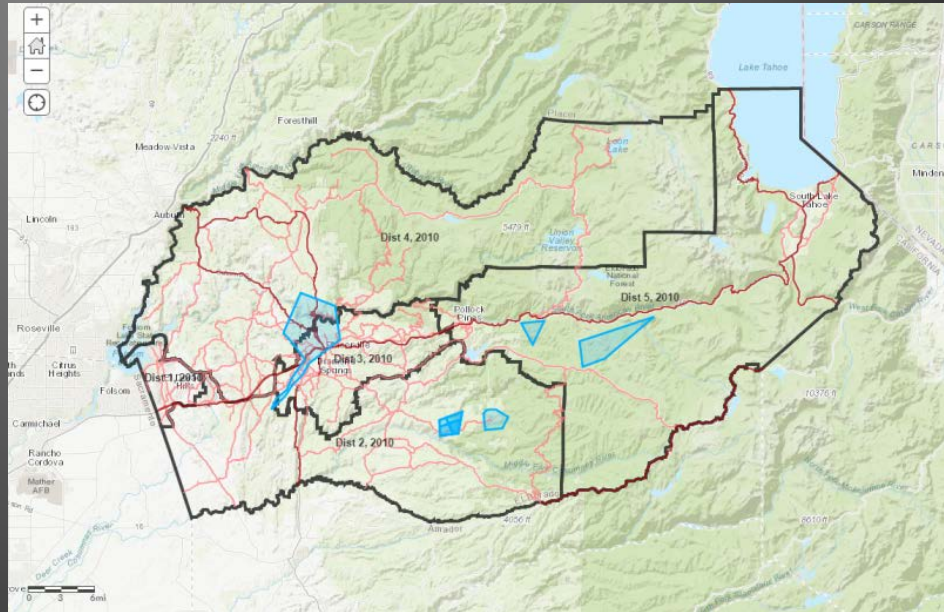
## AFTER WE HAVE THE DATA:



# MAP ALTERNATIVES

*Map Demonstration:*

1. *City Alternative Revised #1*
2. *City Alternative Revised #2*
3. *Pollock Pines Alternative*



# PUBLIC INPUT AND DISCUSSION

